



NEW HOPE
GROUP

**New Acland mine site:
Test for Isolation Box.**

Test for Isolation box

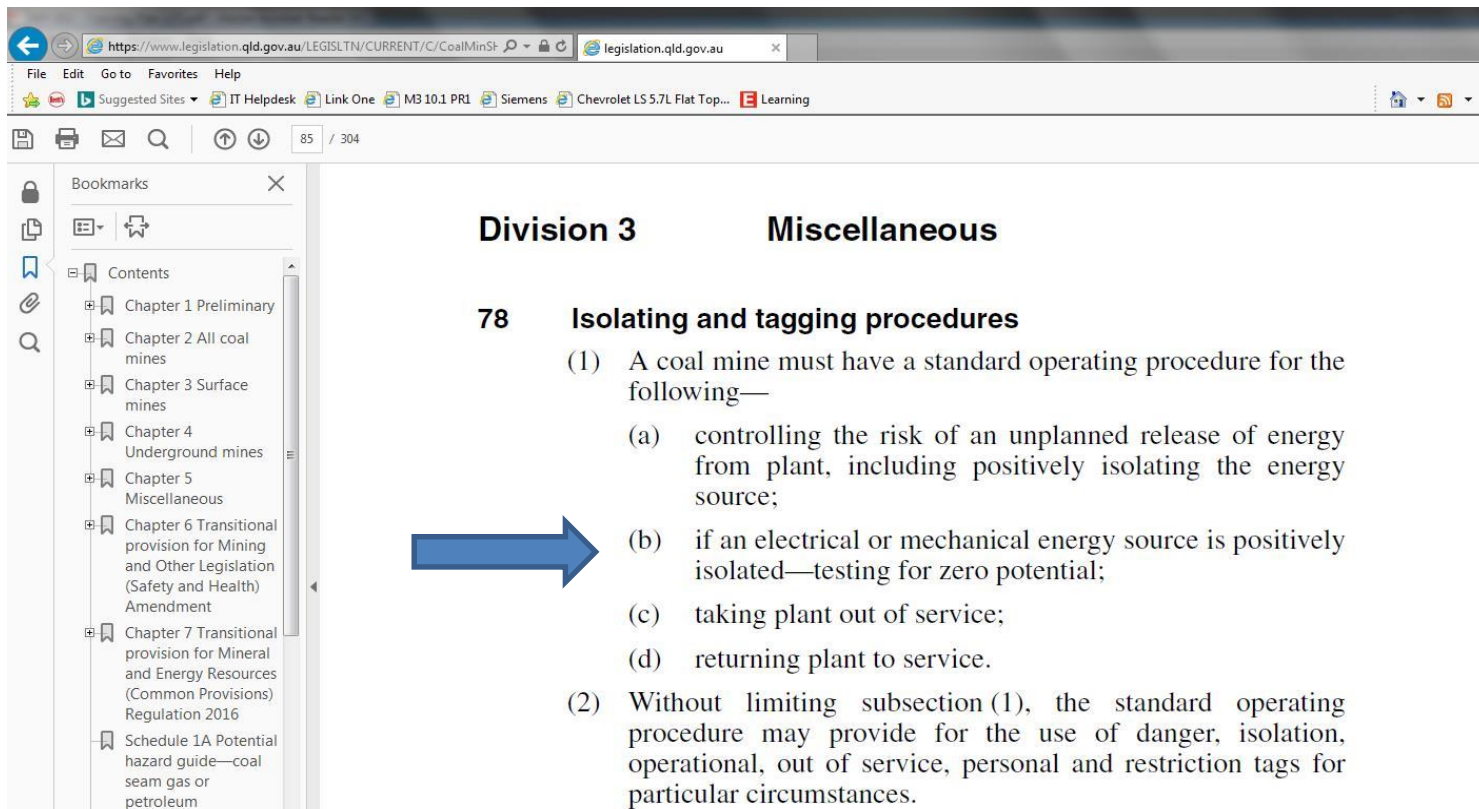


Simplifying isolation of mobile equipment fitted with extra low voltage single point isolation

What is the problem?

UNDERSTANDING THE PROBLEM:

- Legislation requires a method for “Test for zero potential” when isolating machinery



The screenshot shows a web browser displaying the Queensland Legislation website. The address bar shows the URL <https://www.legislation.qld.gov.au/LEGISLTN/CURRENT/C/CoalMinSt>. The page content is divided into two main sections: **Division 3** and **Miscellaneous**. Under **Division 3**, section **78 Isolating and tagging procedures** is highlighted. A blue arrow points from the left sidebar to this section. The sidebar contains a list of contents, including Chapter 1 Preliminary, Chapter 2 All coal mines, Chapter 3 Surface mines, Chapter 4 Underground mines, Chapter 5 Miscellaneous, Chapter 6 Transitional provision for Mining and Other Legislation (Safety and Health) Amendment, Chapter 7 Transitional provision for Mineral and Energy Resources (Common Provisions) Regulation 2016, and Schedule 1A Potential hazard guide—coal seam gas or petroleum. The main content area lists the following provisions:

- (1) A coal mine must have a standard operating procedure for the following—
 - (a) controlling the risk of an unplanned release of energy from plant, including positively isolating the energy source;
 - (b) if an electrical or mechanical energy source is positively isolated—testing for zero potential;
 - (c) taking plant out of service;
 - (d) returning plant to service.
- (2) Without limiting subsection (1), the standard operating procedure may provide for the use of danger, isolation, operational, out of service, personal and restriction tags for particular circumstances.

Why is this a problem?



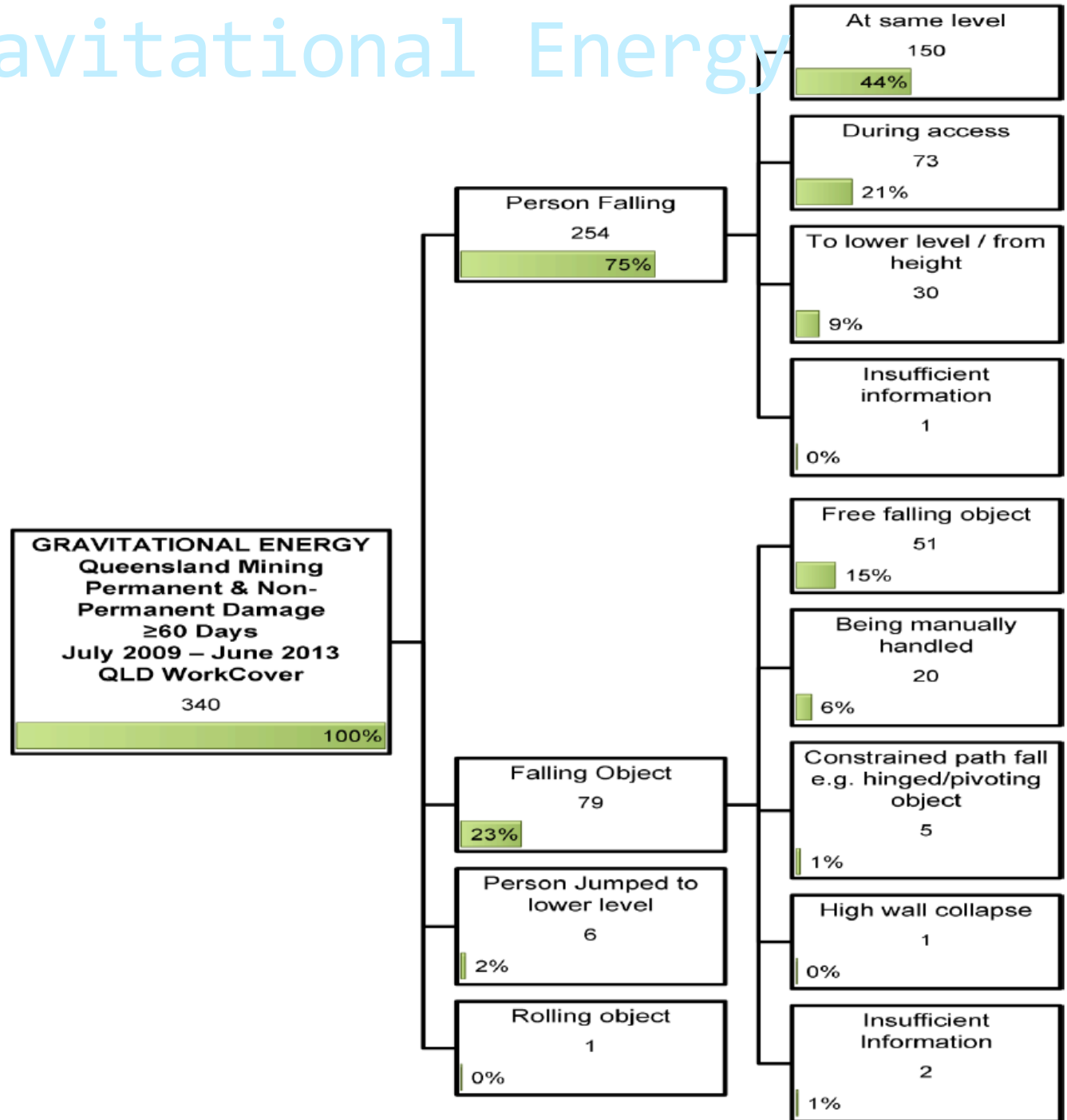
Test for isolation box



Gravitational Energy

Gravitational energy

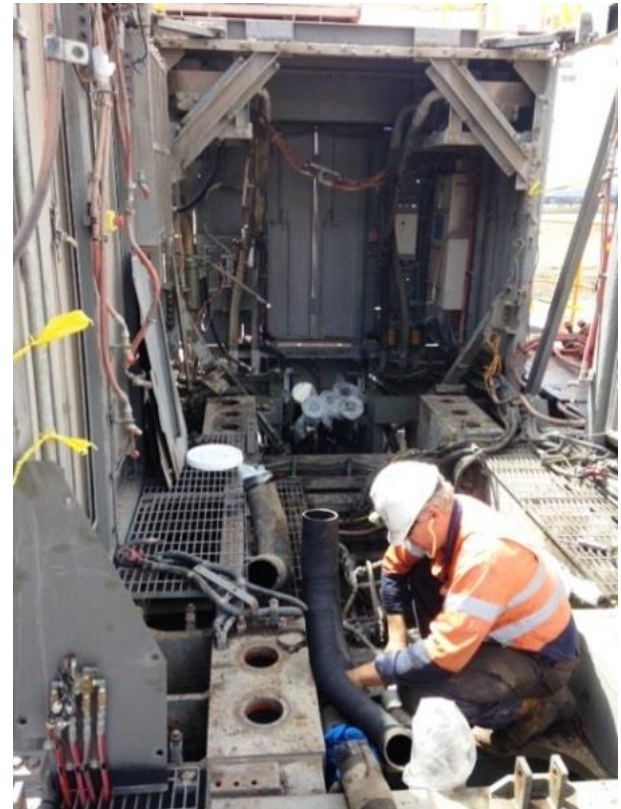
comprises 340 records which equal **28%** of the 1230 records



Video to demonstrate



Additional issues



Test for isolation box

Additional issues



Test for isolation box

Additional Issues

Long & complicated training process currently required

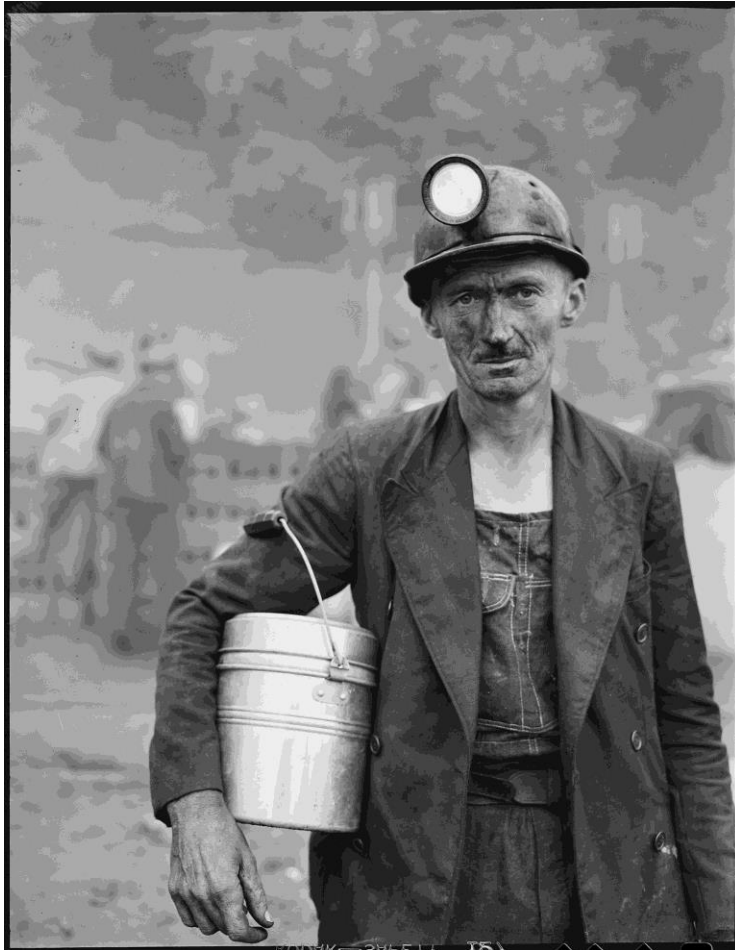


Additional Issues



Test for isolation box

Additional issues

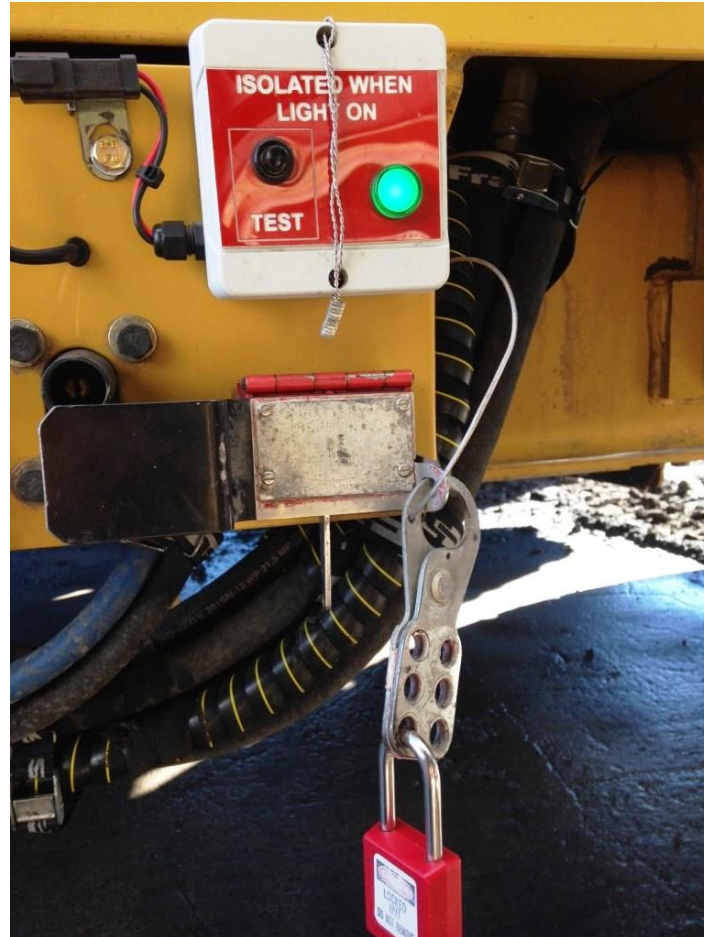


• VISITORS •



The Solution

- **Test for isolation box**



How to use – 3 easy steps

1. Isolate
– Light must go on



2. Lock isolator



3. Press test button
– Light must go out



- Additional personnel can test for zero at any time & add their lock on the isolator

Benefits



Test for isolation box

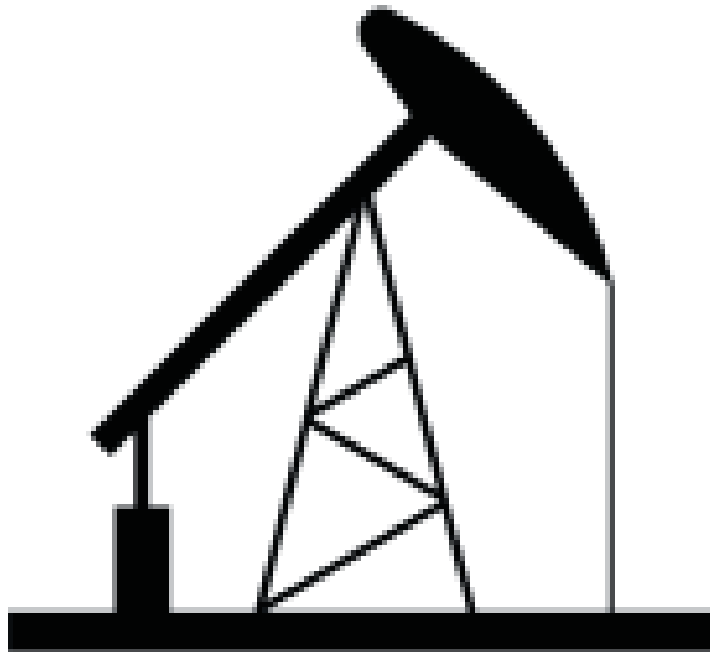
Benefits



Test for isolation box

Additional possibilities

Other industries:



Test For Isolation Box



Test For Isolation Box



Test for isolation box

Test For Isolation Box

Thankyou for listening & the opportunity
to present this innovation



NEW HOPE
GROUP

New Acland mine site