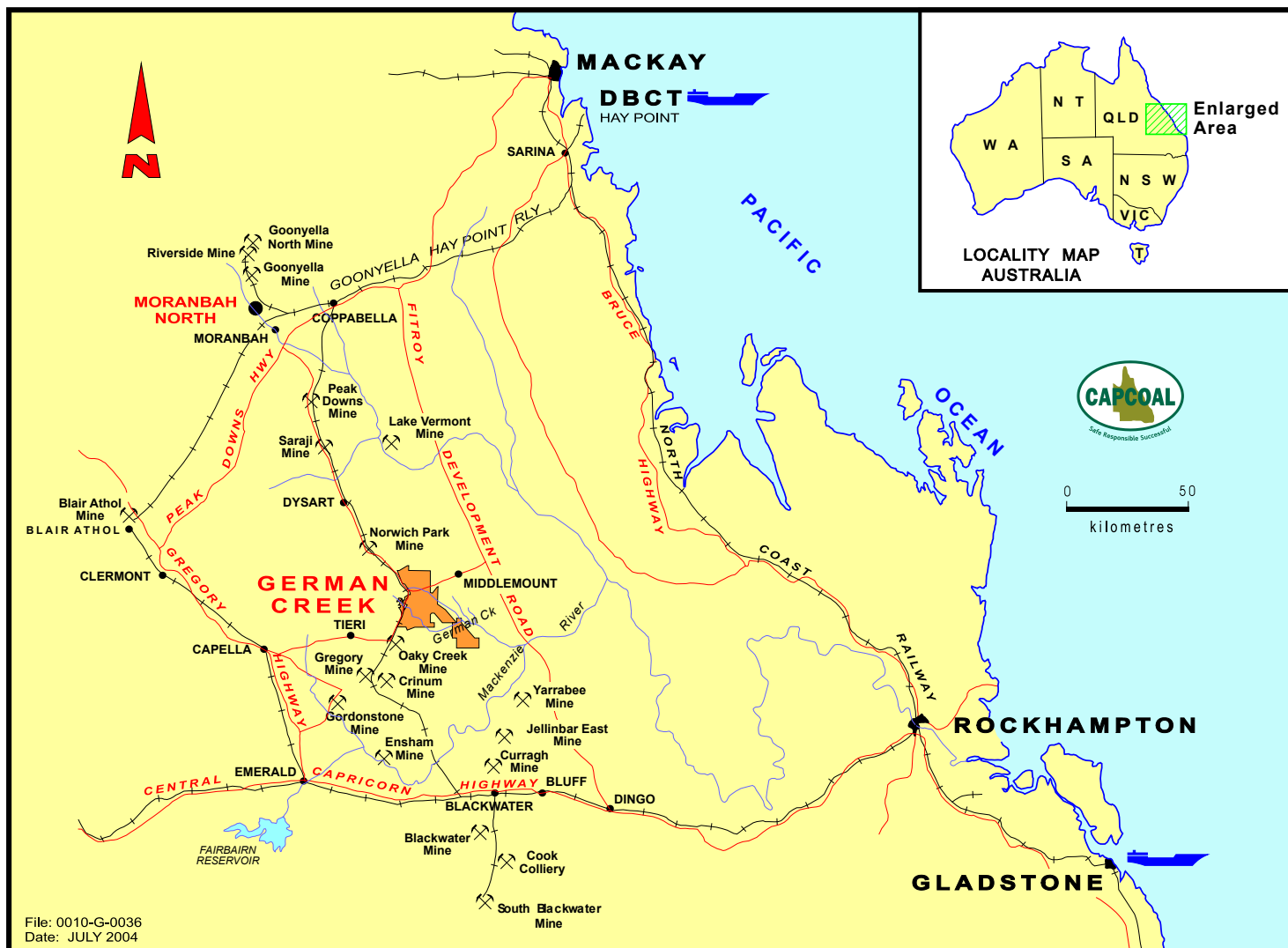


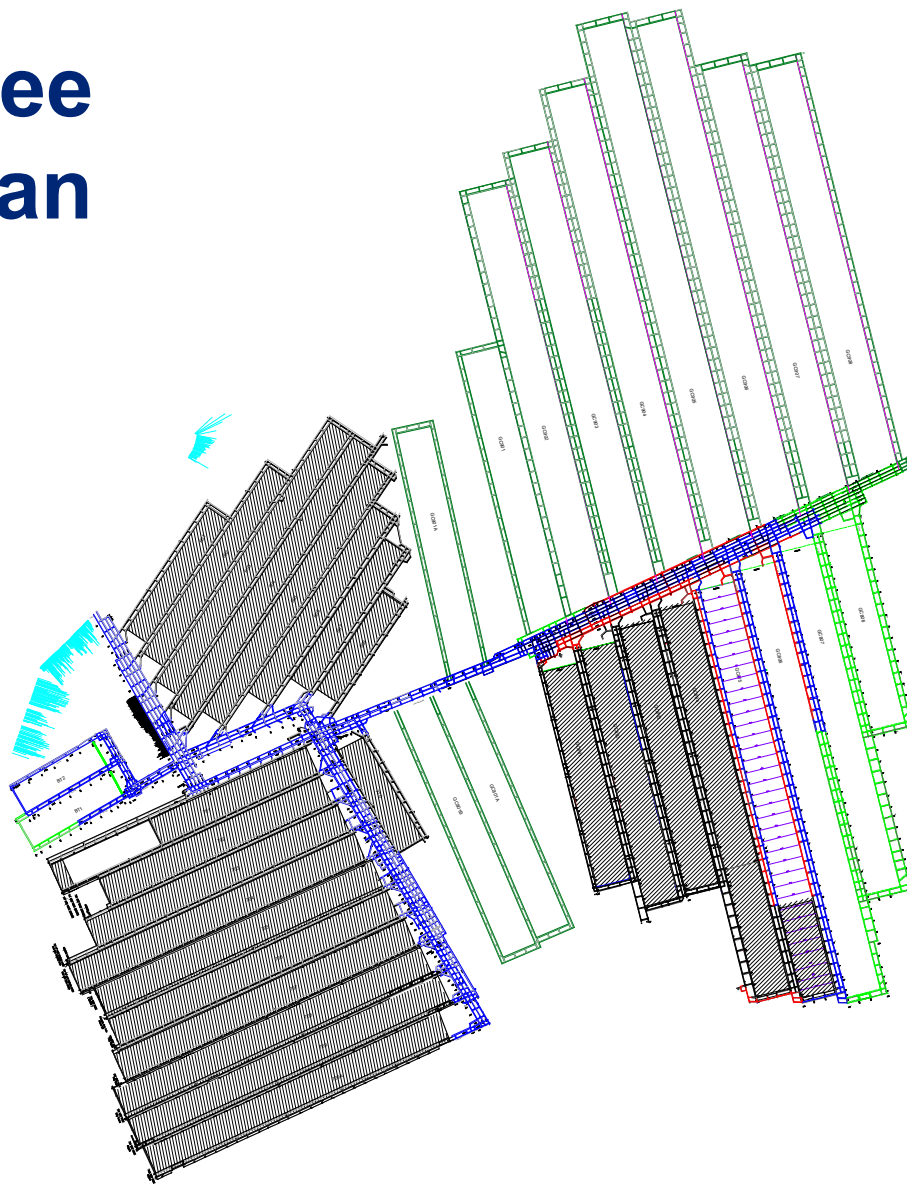
A1 Training at Grasstree Mine



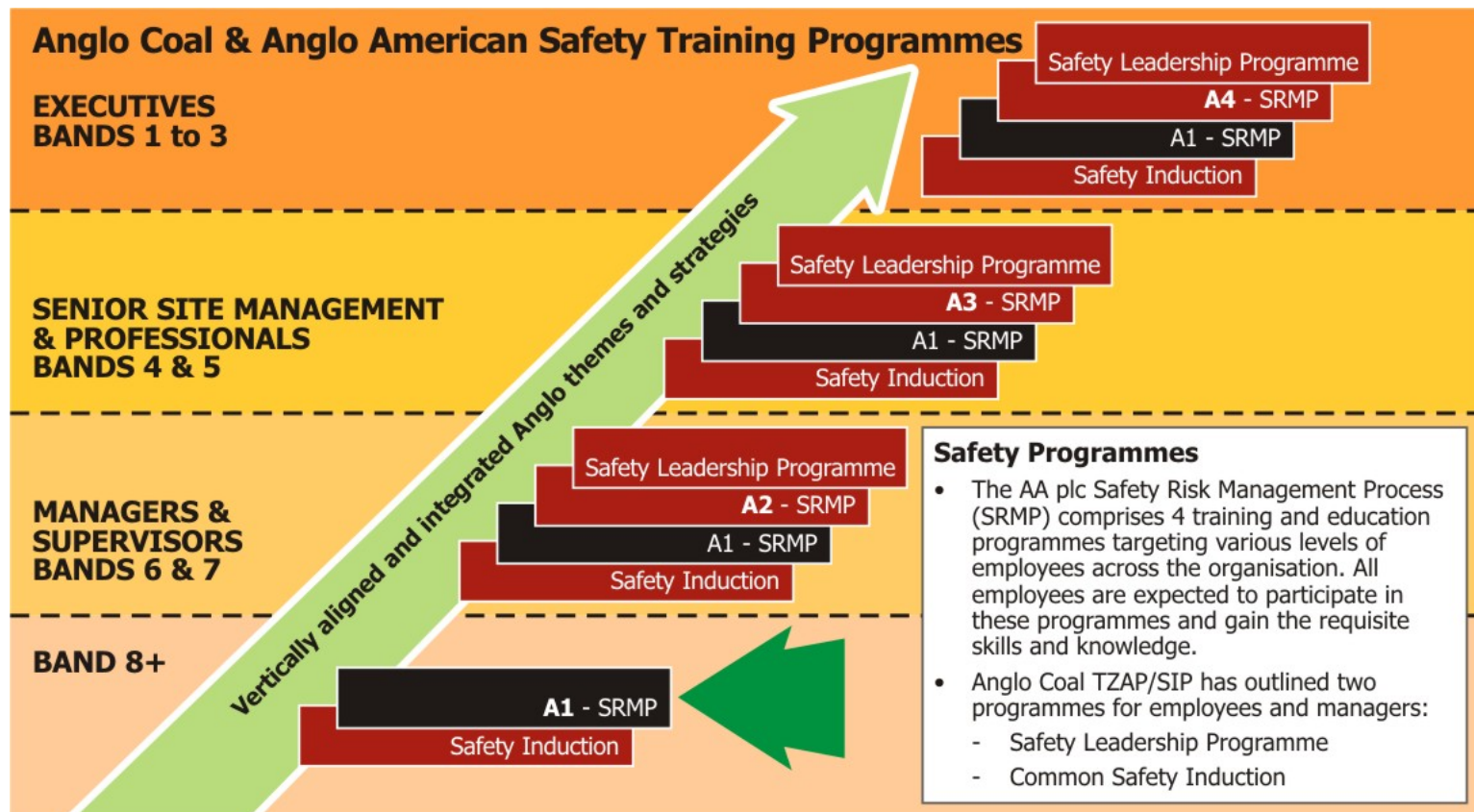
German Creek Location



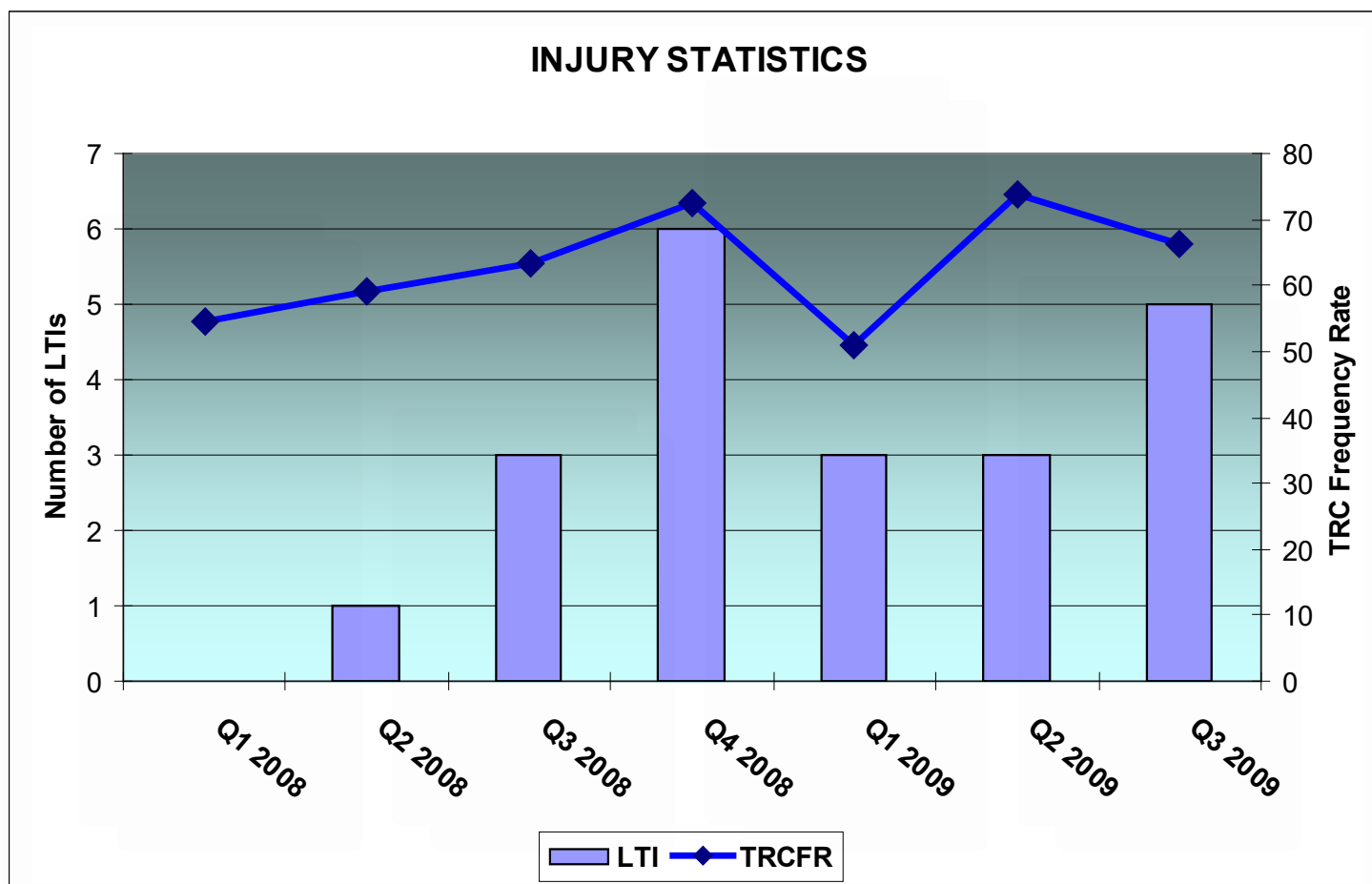
Grasstree Mine Plan



The A1 Programme's position within safety training at Anglo Coal



LTI & TRCFR (Jan 2008 – Sep 2009)



A1 Training Overview

Section 1: Introduction to Safety Risk Management

Section 2: Why we Manage Risk

Section 3: SRM at Anglo Coal

Section 4: The SRM Process - Hazard Identification

A1 Training Overview

Section 5: The SRM Process - Risk Assessment

Section 6: The SRM Process - Risk Management

Section 7: The SRM Process - Recording & Reporting

Risk Management Models

- The SLAM Process



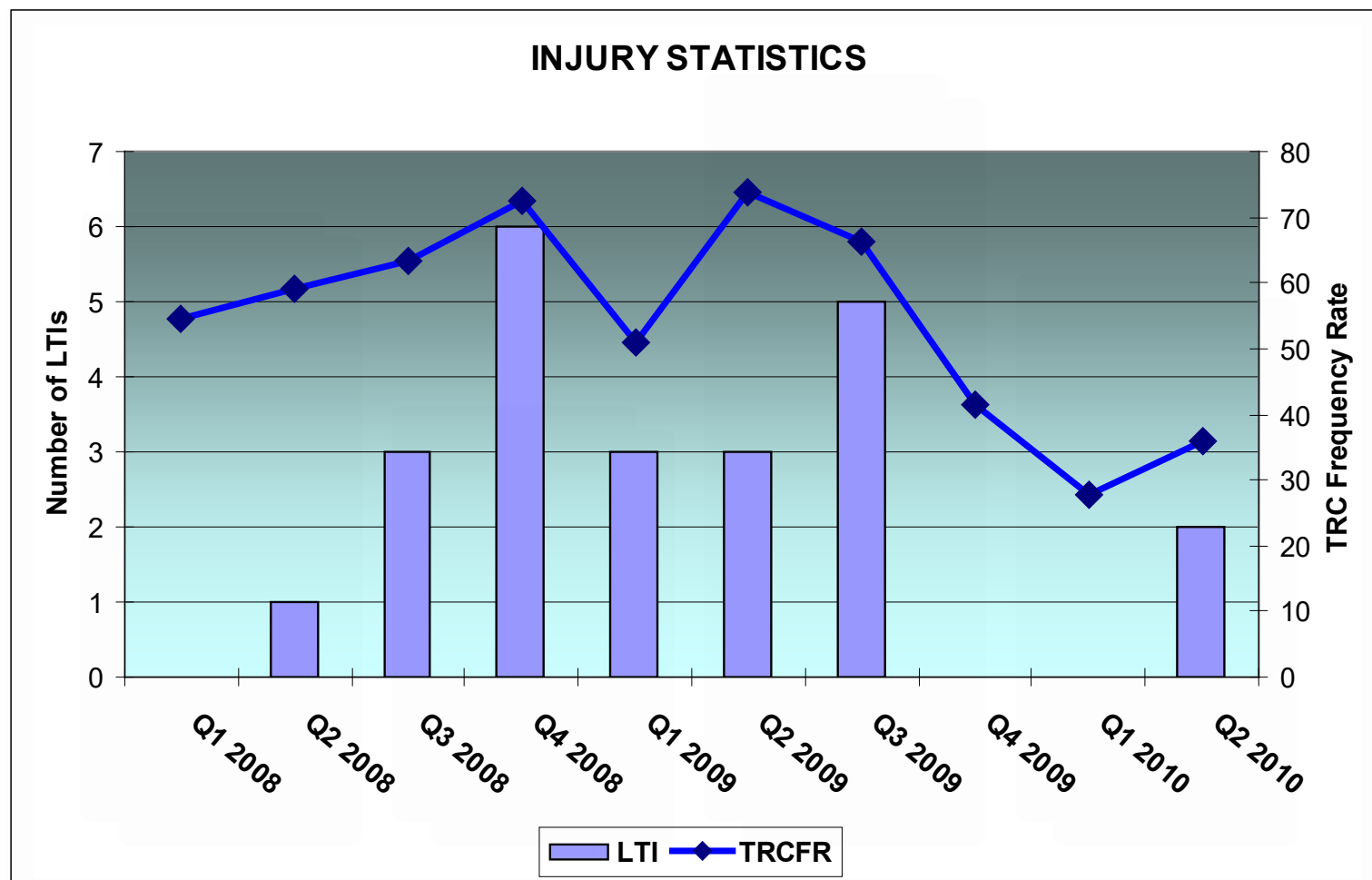
Management Delivery of A1 Training



Workforce Completing Test

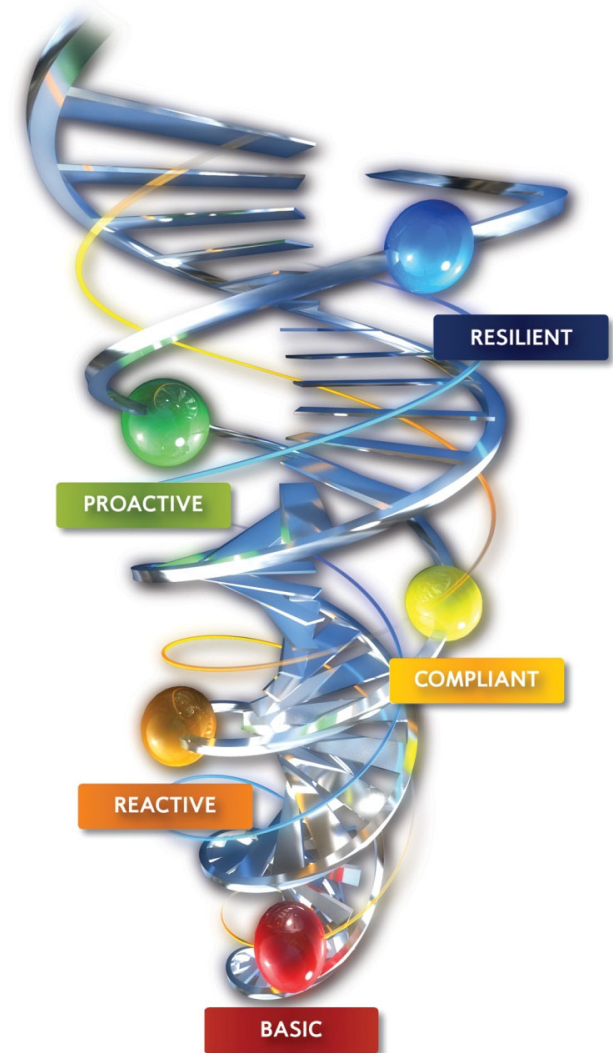


LTI & TRCFR (Jan 2008 – June 2010)



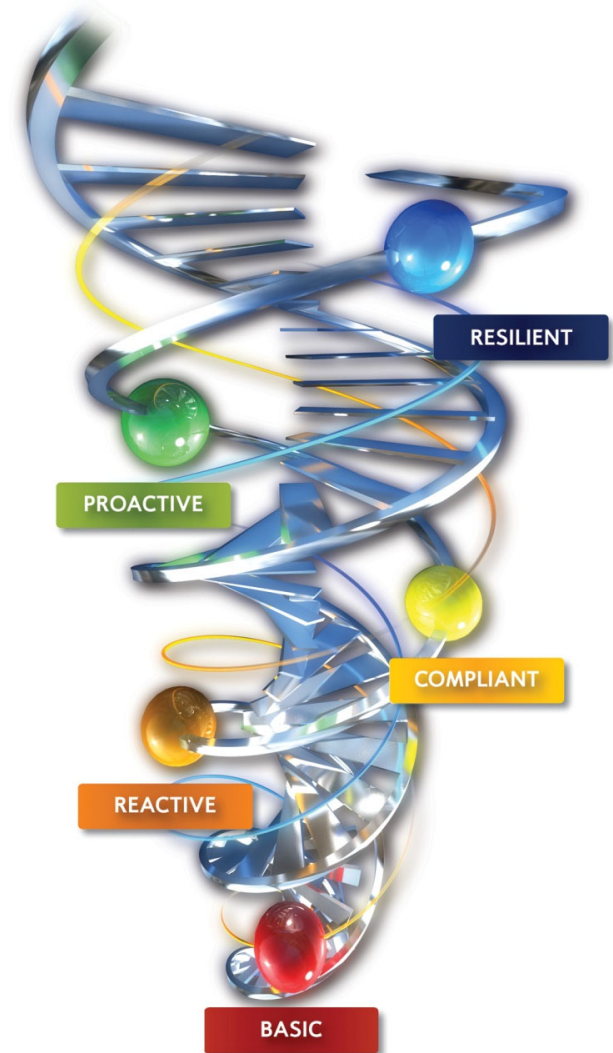
The Anglo Journey Model

- Helps business divisions and sites assess their safety maturity.
- A3 and A4 provide tools and techniques to progress on the journey.



The Anglo Journey Model

- A1 and A2 provide personal awareness of an individual's place on the journey and skills to use tools.
- Combination of cultural and systems maturity to achieve safe business performance.



The purpose of the Anglo Coal SRM Process

Purpose

“To establish and embed a world class “One Anglo” safety risk management process that delivers radical improvement in safety for all our people ”.

Vision

“All our people make the right decisions affecting safety ”.

Summary Information of A1 Training

- 34 A1 courses ran.
- 239 employees trained.
- 48 contractors trained.

Conclusion

- Training and knowledge are the basis of competence.
- Mine management presenting this information develops a common belief in safety achievement and a passion to apply this new knowledge.

Conclusion

- Today when discussing safety underground with employees it is common to identify energy sources, outline hazards to be dealt with and what controls will make a difference.
- Simple Solutions to Complex Problems.