



# 797B REAR CHASSIS ACCESS WORK PLATFORM

Dawson Mines Maintenance Team

---

# CAT 797B rear dumps are the largest trucks in the Anglo American fleet



# Problem

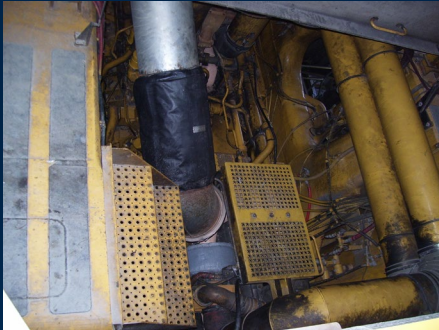
---

- A risk assessment identified that 797B's have inadequate access or fall protection to perform maintenance tasks
  - Maintenance tasks in the rear chassis of 797B's are conducted:
    - ◆ with poor access
    - ◆ at heights over 4 metres with poor or no fall protection barriers
    - ◆ with restricted ability to take tools into the work area safely
-



# Access through the engine bay

---





# Access via irregular foot pegs- open to 4m fall

---



# SOLUTION

---

A drop in work platform has been designed and built by the Dawson Mines maintenance team







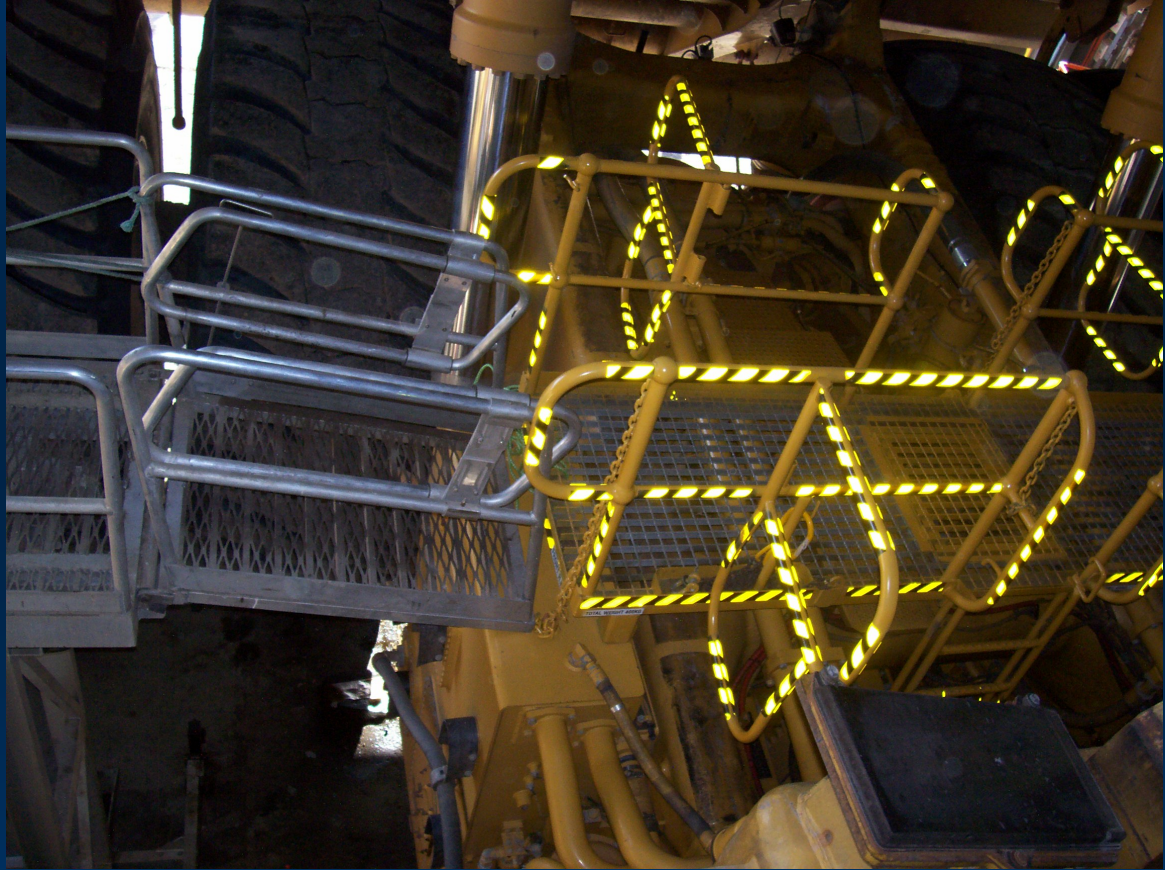
FRONT L.H.S.  
Lowering of platform are using  
centrally on hydraulic and foot lock

If You Think It's Unsafe  
- It Probably Is

Don't fix the blame  
Fix the problem

COAL  
T 13 15

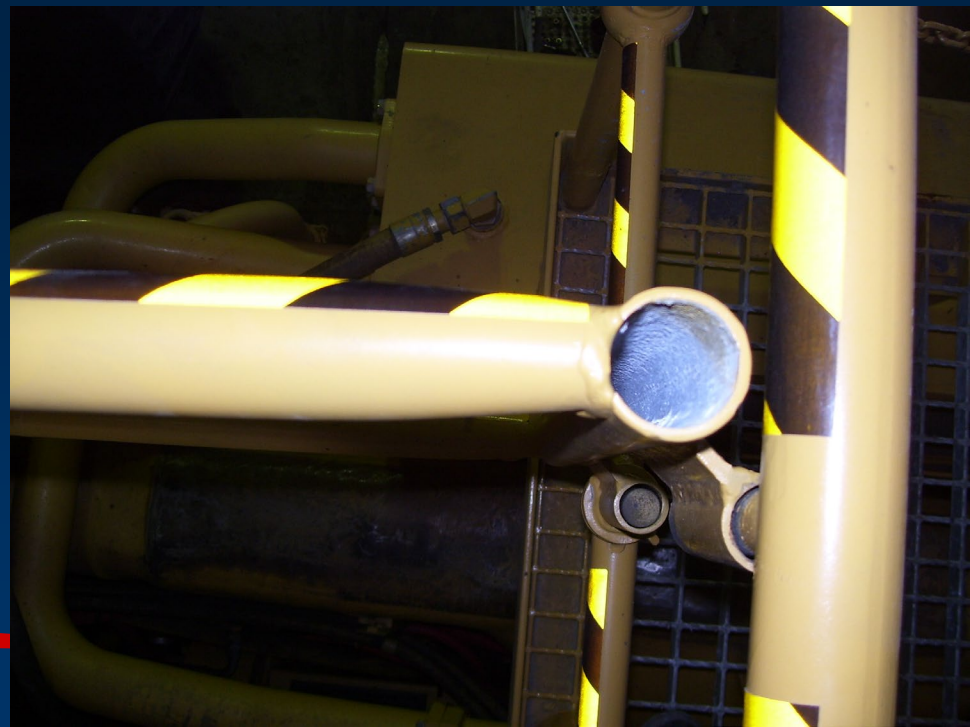




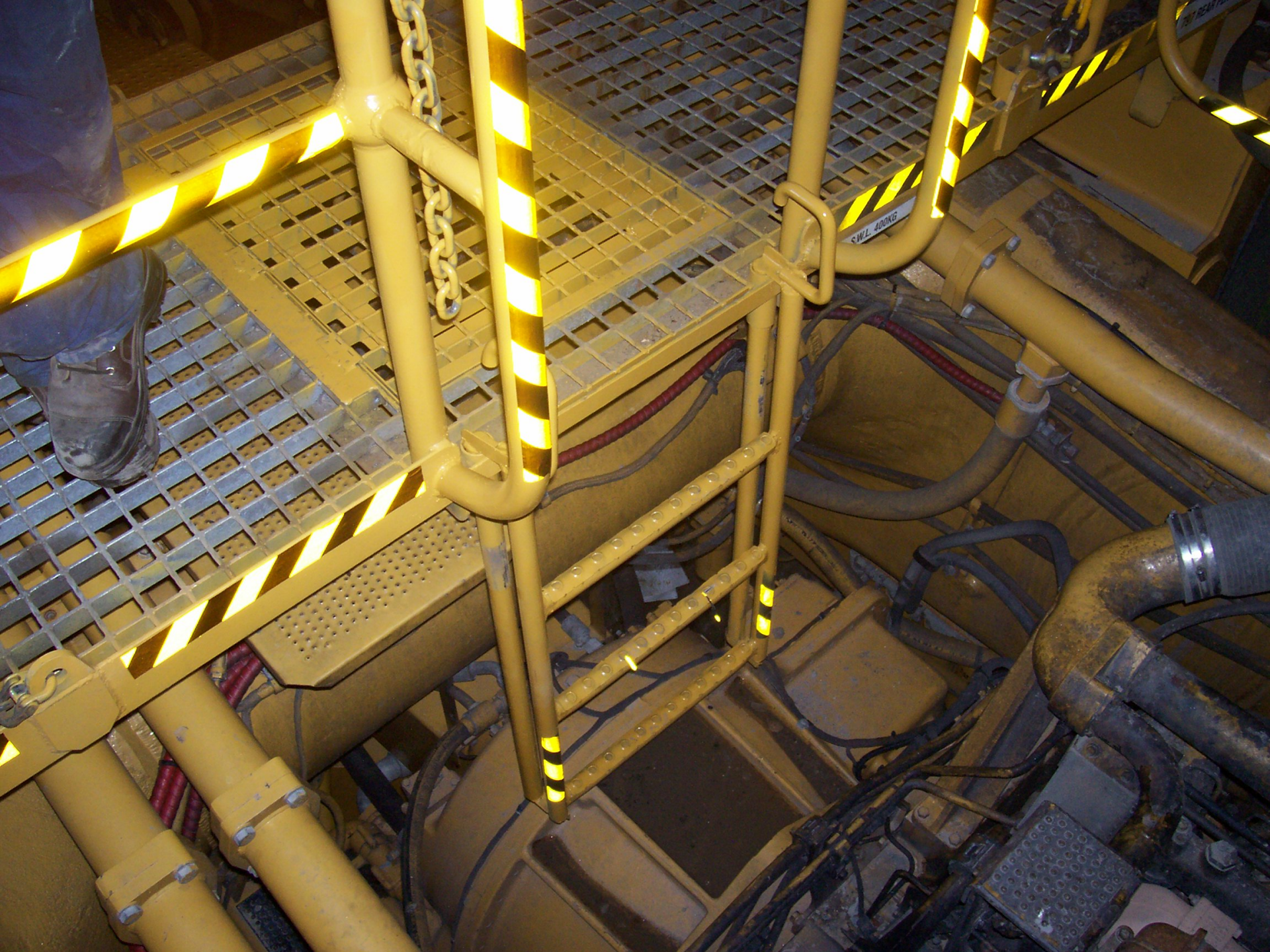




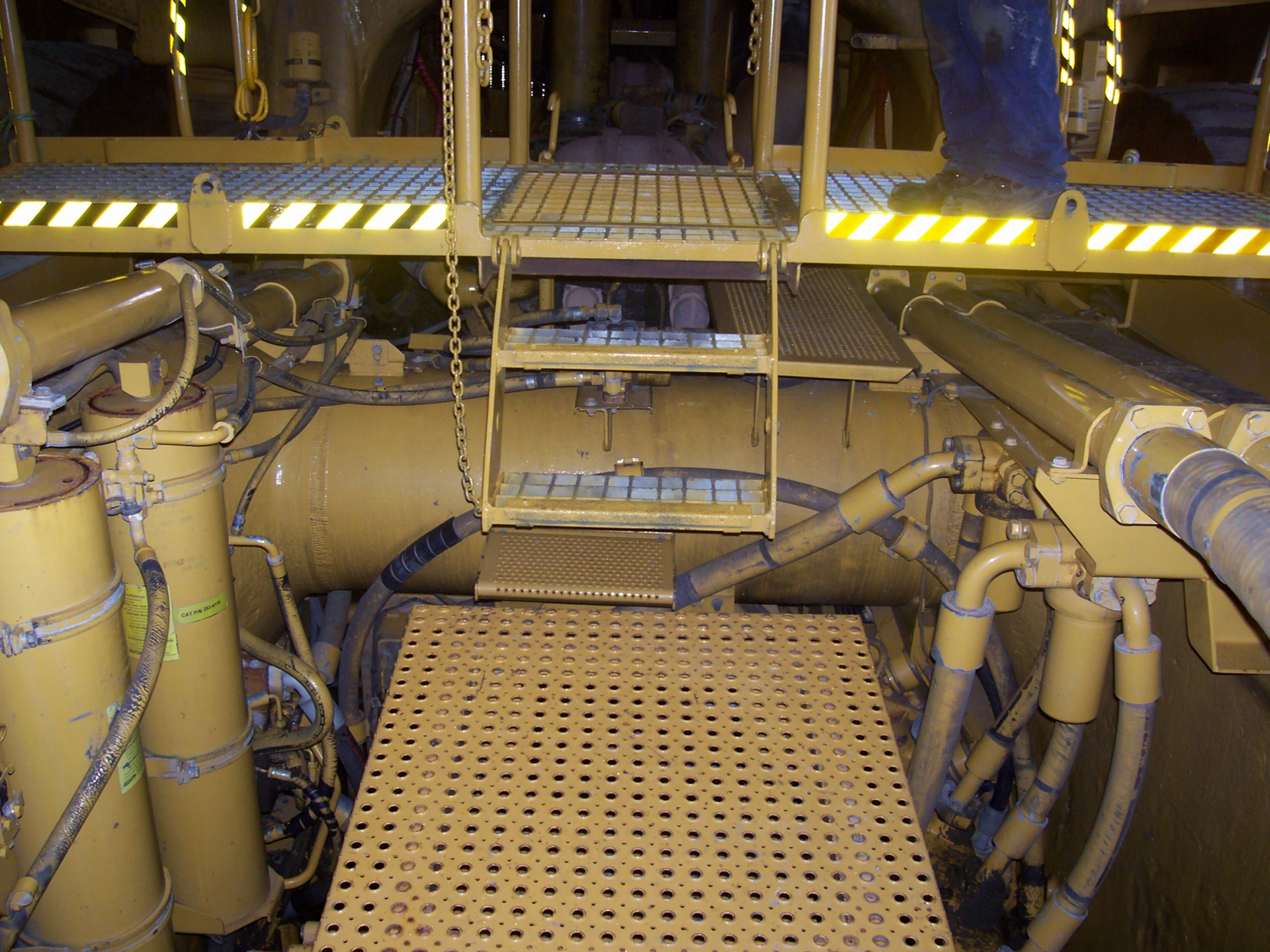




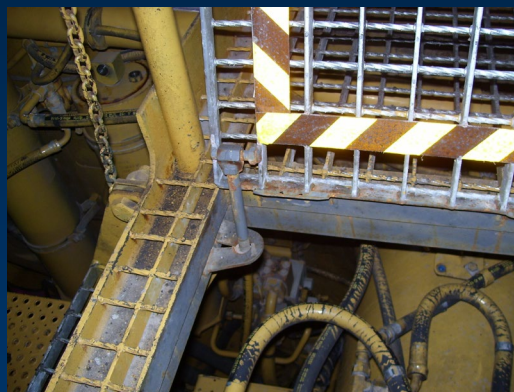
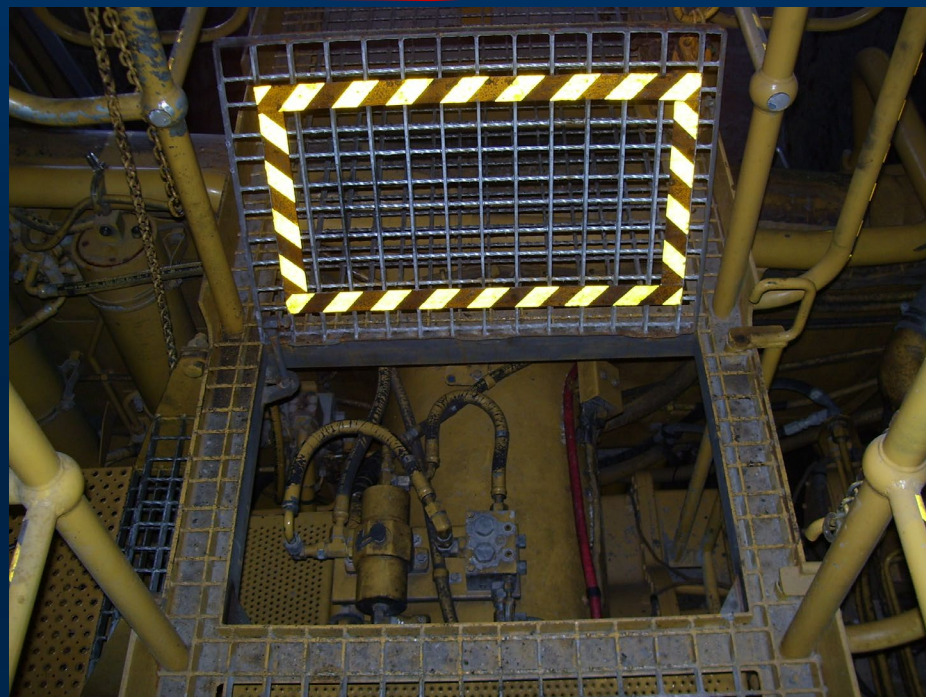
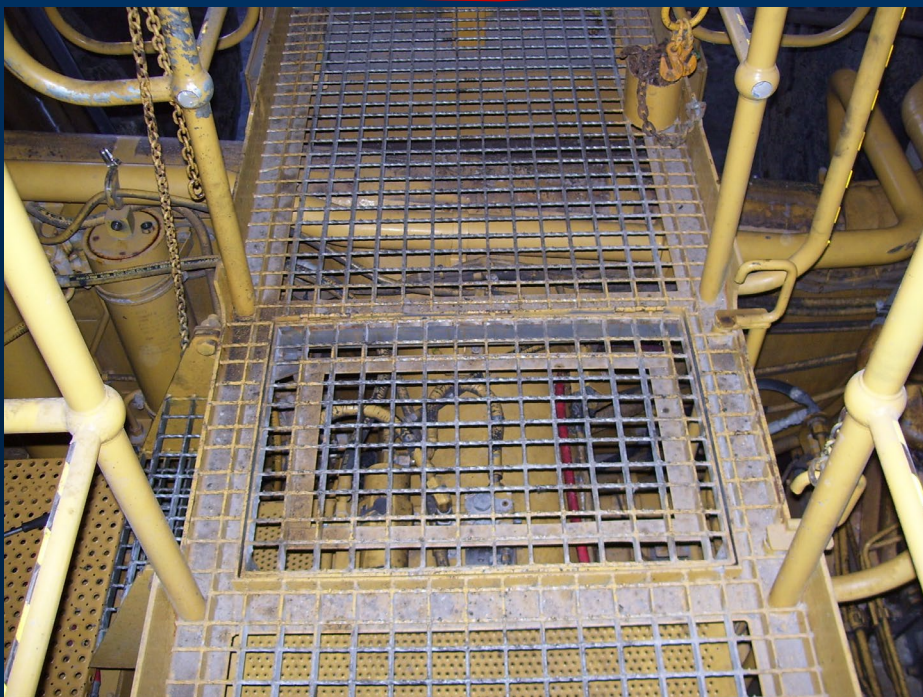
















# Benefits

---

- Engineering control for falls from height hazard when working in the rear chassis of 797B rear dumps
  - Safe easy access- employees walk onto the truck and safely carry tools
  - Team displayed an “above expectations” commitment to safety by identifying a number of hazards during building the platform and implementing controls to overcome them
-

# Transferability Across Industry

---

- Transferable to all sites that use rear dump haulers with maintenance access and working at heights issues
  - The design can be easily adapted to other truck models and sizes
-



# The Team that made it happen...

---

The team won 1<sup>st</sup> Place in the Anglo American CEO Safety Best Practice Awards

Peter Plummer  
Chris Michael  
Trevellyn Evans  
Edward Homer  
Grant Wisseman  
Jeff Fowler



