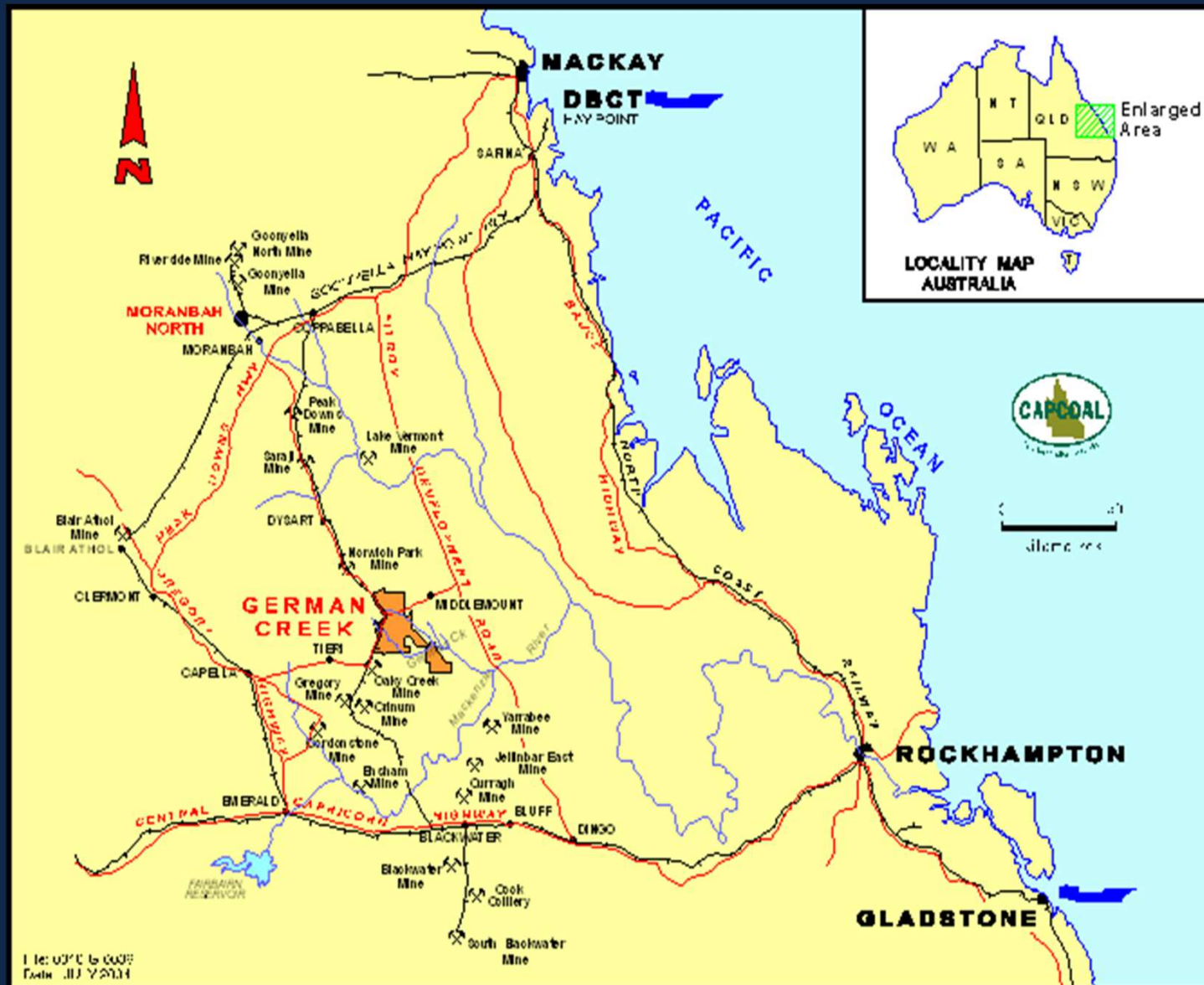


# Safety Performance at Aquila Colliery 'from worst to best in 4 years'

Mike Downs

**TARGET ZERO**  **Zero fatalities & Zero lost time injuries  
OUR STEPPING STONE TO ZERO HARM**

---



**TARGET ZERO** Zero fatalities & Zero lost time injuries  
 OUR STEPPING STONE TO ZERO HARM



# Capcoal Underground Mines

## Central

22 blocks, sealed 2007

## Bundoora

3<sup>rd</sup> of 4 Blocks

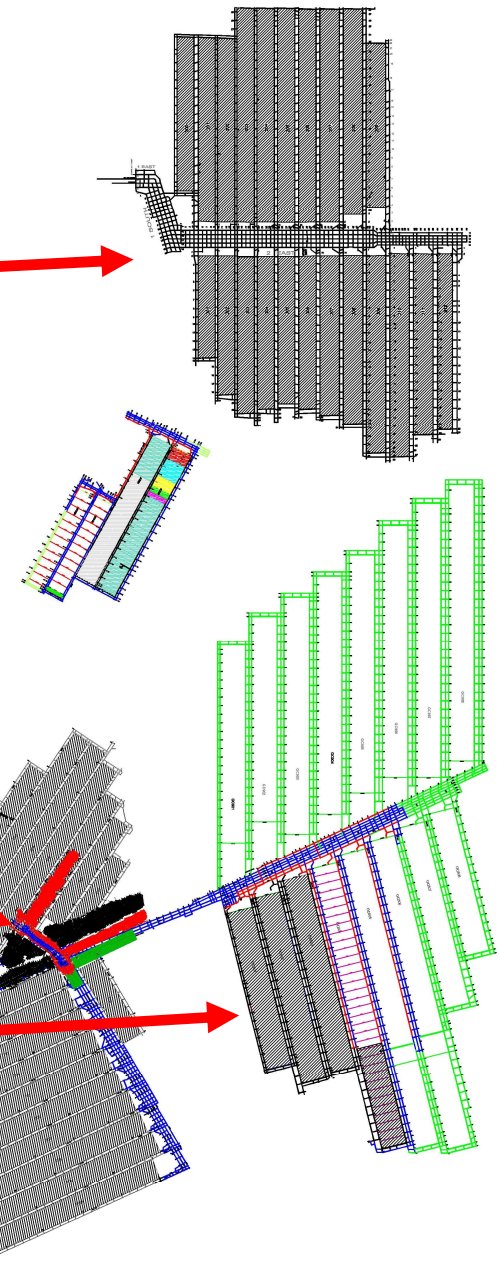
## Southern (GTW)

19 blocks mined, 2  
unmined

## Aquila Sealing

## Grasstree

4<sup>th</sup> of 8 blocks



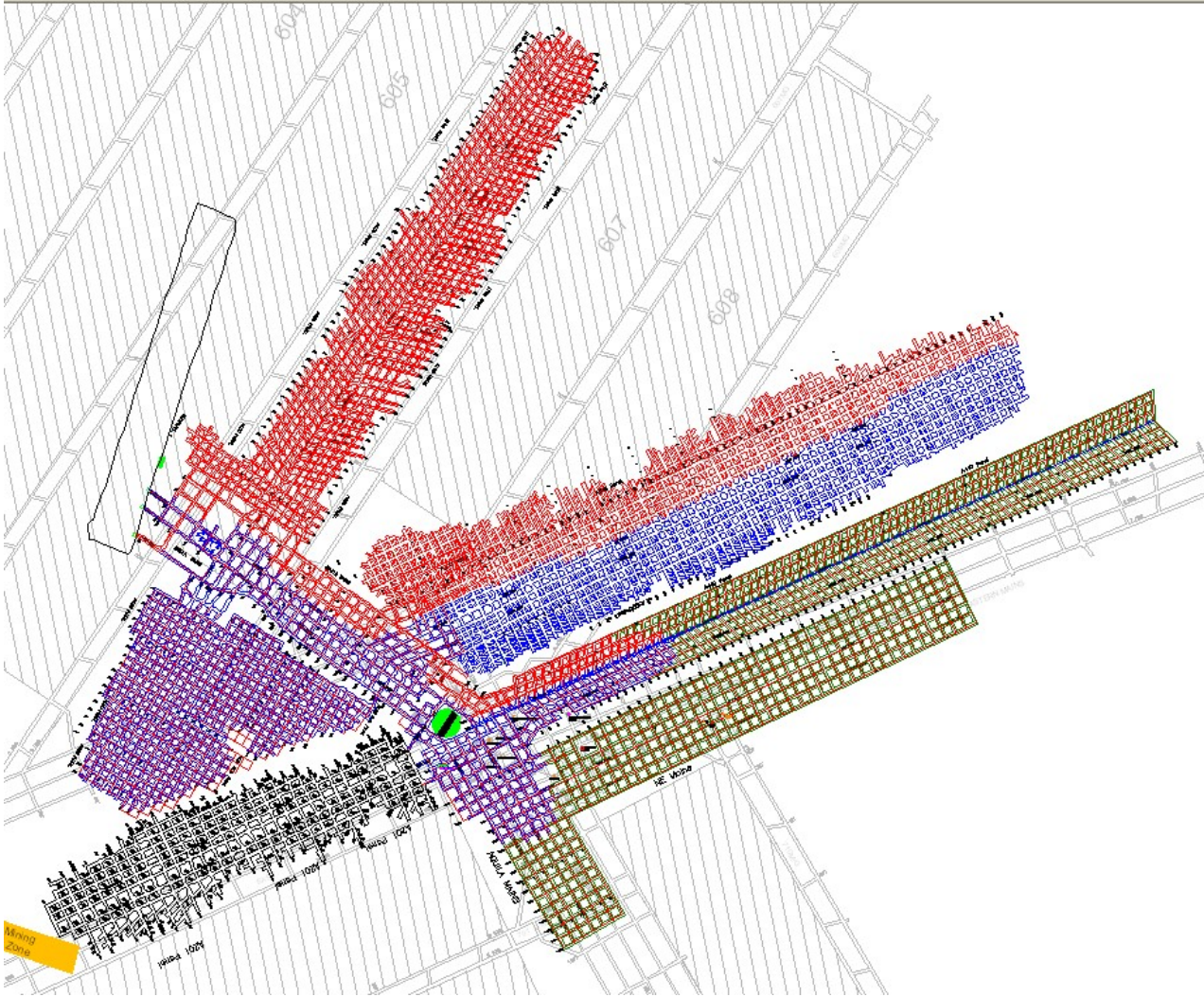
# TARGET ZERO

Zero fatalities & Zero lost time injuries  
OUR STEPPING STONE TO ZERO HARM





# Aquila



- Low Seam Operation  
~ 1.5 - 1.8m
- Place Change Mining
- ~ 500,000 tpa
- ~ 600m / wk
- Continuous haulage system trialled
- Second Workings

**TARGET ZERO**

Zero fatalities & Zero lost time injuries  
OUR STEPPING STONE TO ZERO HARM



# Geological Summary

## Aquila Seam

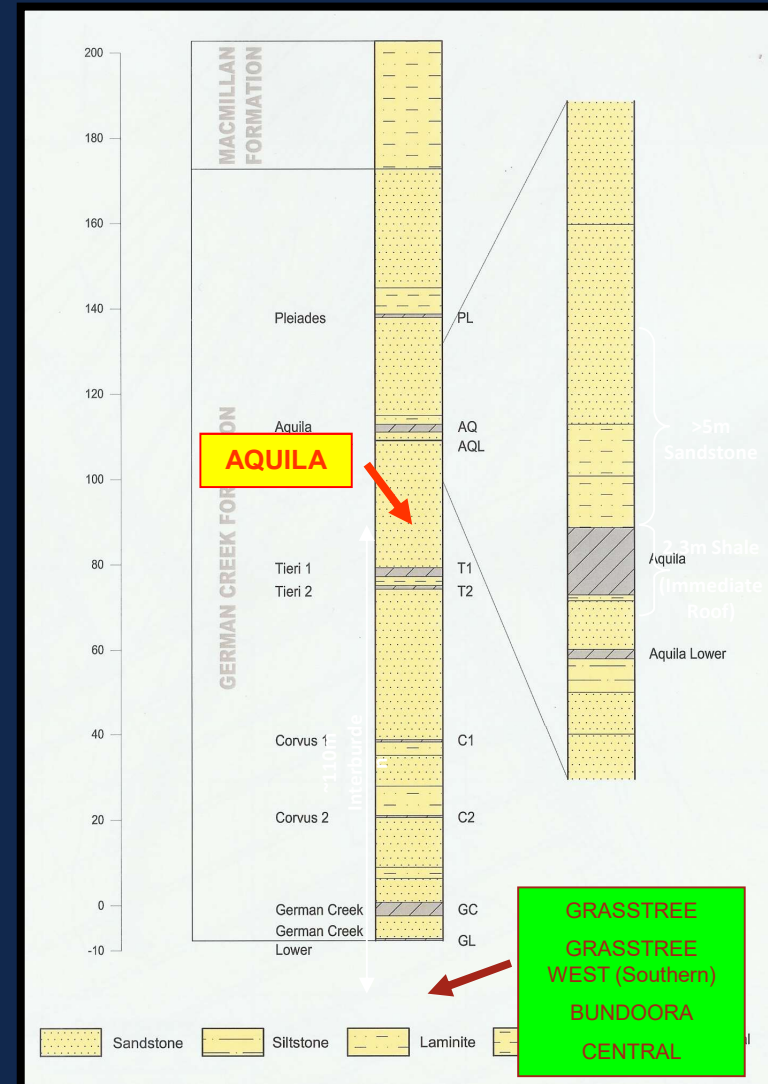
~1.6m thick seam  
Depth of cover <130m  
Low-moderate stress environment –  
Thinly bedded bright coking coal  
110m above Southern Colliery  
workings

## Strata Support

1.5m AX bolts  
4 bolts pattern with 1.2m row spacing

## Cutting height

1.8m in belt roads  
2.0m in travel roads  
Seam only in other roads



**TARGET ZERO**

Zero fatalities & Zero lost time injuries  
OUR STEPPING STONE TO ZERO HARM





**TARGET ZERO** Zero fatalities & Zero lost time injuries  
OUR STEPPING STONE TO ZERO HARM







**TARGET ZERO** Zero fatalities & Zero lost time injuries  
OUR STEPPING STONE TO ZERO HARM







**TARGET ZERO** Zero fatalities & Zero lost time injuries  
OUR STEPPING STONE TO ZERO HARM







**TARGET ZERO** Zero fatalities & Zero lost time injuries  
OUR STEPPING STONE TO ZERO HARM





**TARGET ZERO** Zero fatalities & Zero lost time injuries  
OUR STEPPING STONE TO ZERO HARM





# Incoal

Incoal is the principle contractor at Aquila, is a USA based company and specialises in thin seam bord & pillar mining.

Low seam technology and equipment was transported from USA and retrofitted to comply with Australian Standards.

The labour force is comprised of specialist low seam miners from both the USA and South Africa supplemented with local personnel.

Incoal have been operating in Australia for approx. 10years operating in NSW (Illawarra & Western Districts) and Qld (Capcoal in the Central Highlands).

Aquila has regularly achieved 100m shifts with development rates averaging 12m/hr.

**TARGET ZERO** Zero fatalities & Zero lost time injuries  
OUR STEPPING STONE TO ZERO HARM



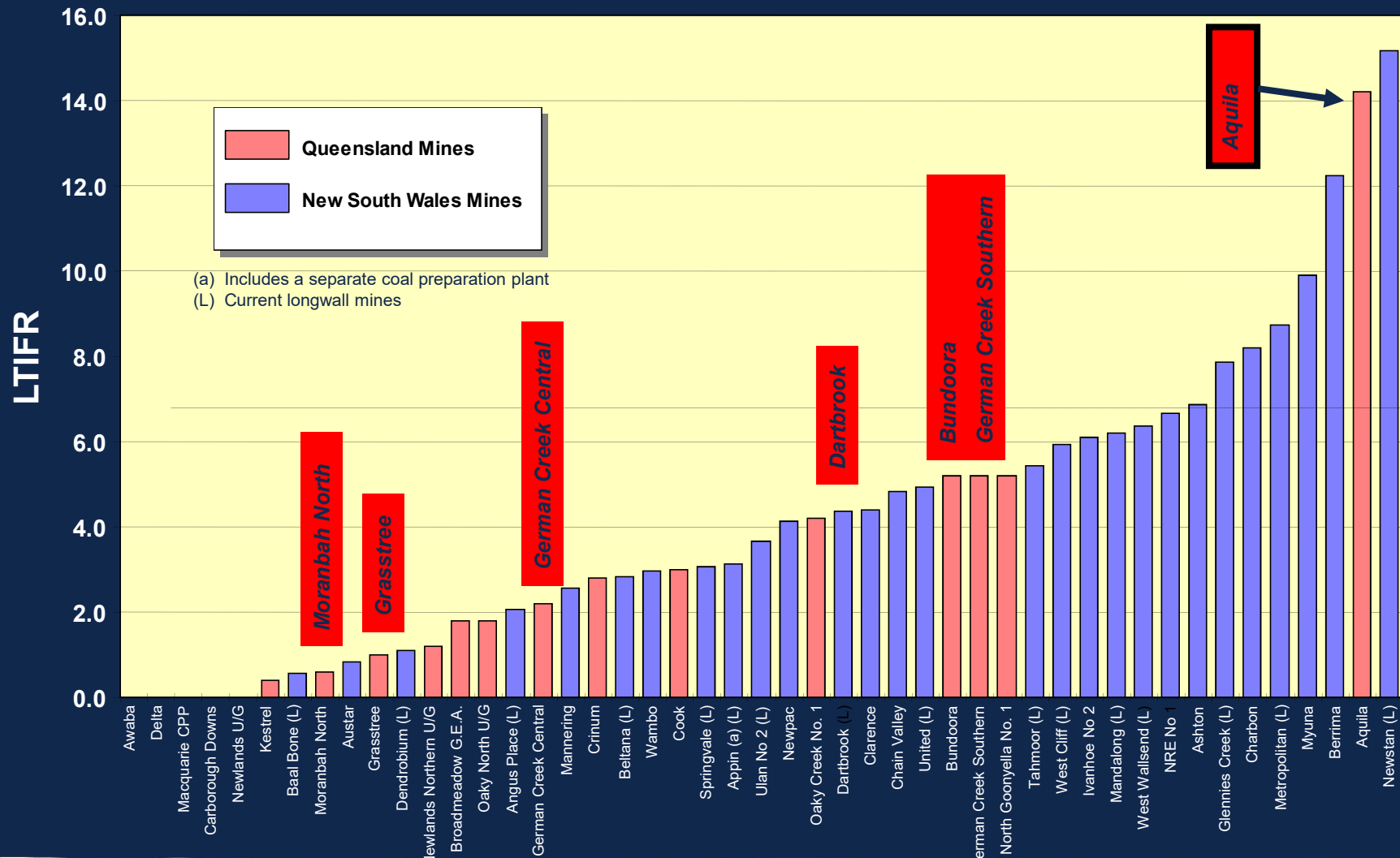
# History

## Where do we come from?

- Highest LTI frequency rate in Queensland
- Small workforce, a single LTI has a huge impact
- Very poor incident frequency – cable damage
- Improve or face drastic action – closure?



# LTIFR Qld & NSW Underground Mines - 2005/2006



**TARGET ZERO**

**Zero fatalities & Zero lost time injuries  
OUR STEPPING STONE TO ZERO HARM**



## Current situation

- More than 1,000 days LTI free
- Best safety record at Capcoal and Anglo Coal Australia

How did we achieve this ?

**TARGET ZERO** Zero fatalities & Zero lost time injuries  
OUR STEPPING STONE TO ZERO HARM





# Production Challenges

## Issue

Cable damage

Mining over goafs

Shortage of skilled  
labor in Australia

Equipment performance

Consistent production

## Action

Cable management plan

Cable rating system

6m roadways

Shorter plunges

Recruit from US &  
South Africa

Maintenance Mgt System

2 units - 1 operating &  
1 on maint.

2 production shifts,  
1 maint. crew per day

**TARGET ZERO**

Zero fatalities & Zero lost time injuries  
OUR STEPPING STONE TO ZERO HARM



- Leadership commitment
  - In the workplace
  - Through interaction
  - Actions – e.g. Metatarsal boots
- Workforce Characteristics
  - Small workforce
  - Enjoys coming to work
  - Enjoys ‘achievement’-
  - “Holding the line” – letting the team down
- Culture:
  - A belief that we are in control and can make a difference
  - A belief that my leader cares about my safety
- Interdependency
  - I look out for my mates, “I am my brothers keeper”
- The immediate leader taking responsibility

# Safety – Target Zero

In 2006 Target Zero goal was set by Anglo Coal

Target Zero is *Zero Fatalities and Zero LTIs in 2008 (and beyond)*.

Identified that significant changes would have to be made if Anglo Coal is to meet the target

Target Zero is considered to be an immediate stepping stone to the ultimate goal of achievement of Zero Harm.

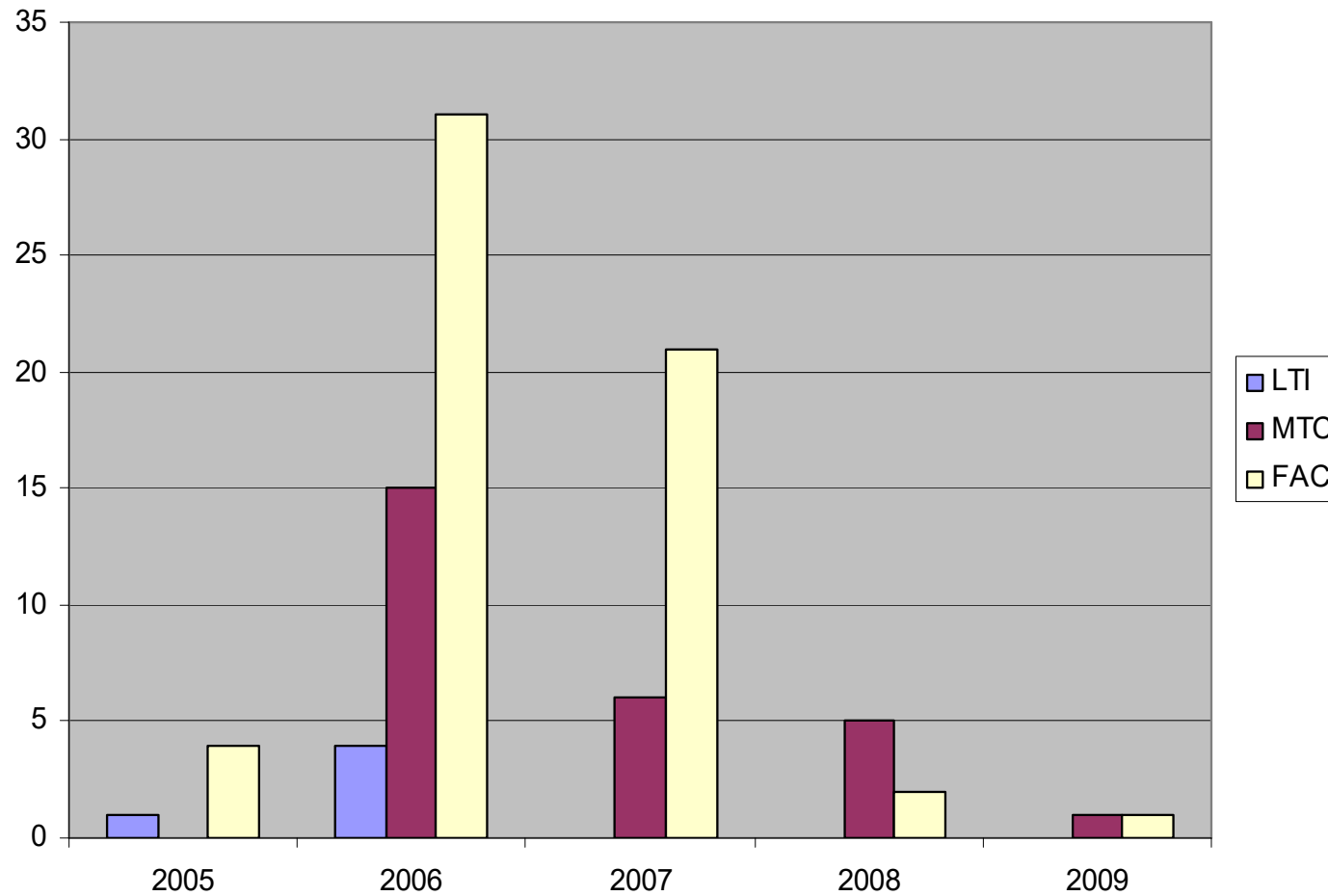
Zero Harm is *Zero Injuries and Zero Occupational Illnesses*. It means that we do not accept that it is necessary for people to be injured whilst working for us.

**TARGET ZERO** Zero fatalities & Zero lost time injuries  
OUR STEPPING STONE TO ZERO HARM





## AQUILA SAFETY TRENDS



**TARGET ZERO**

Zero fatalities & Zero lost time injuries  
OUR STEPPING STONE TO ZERO HARM

