

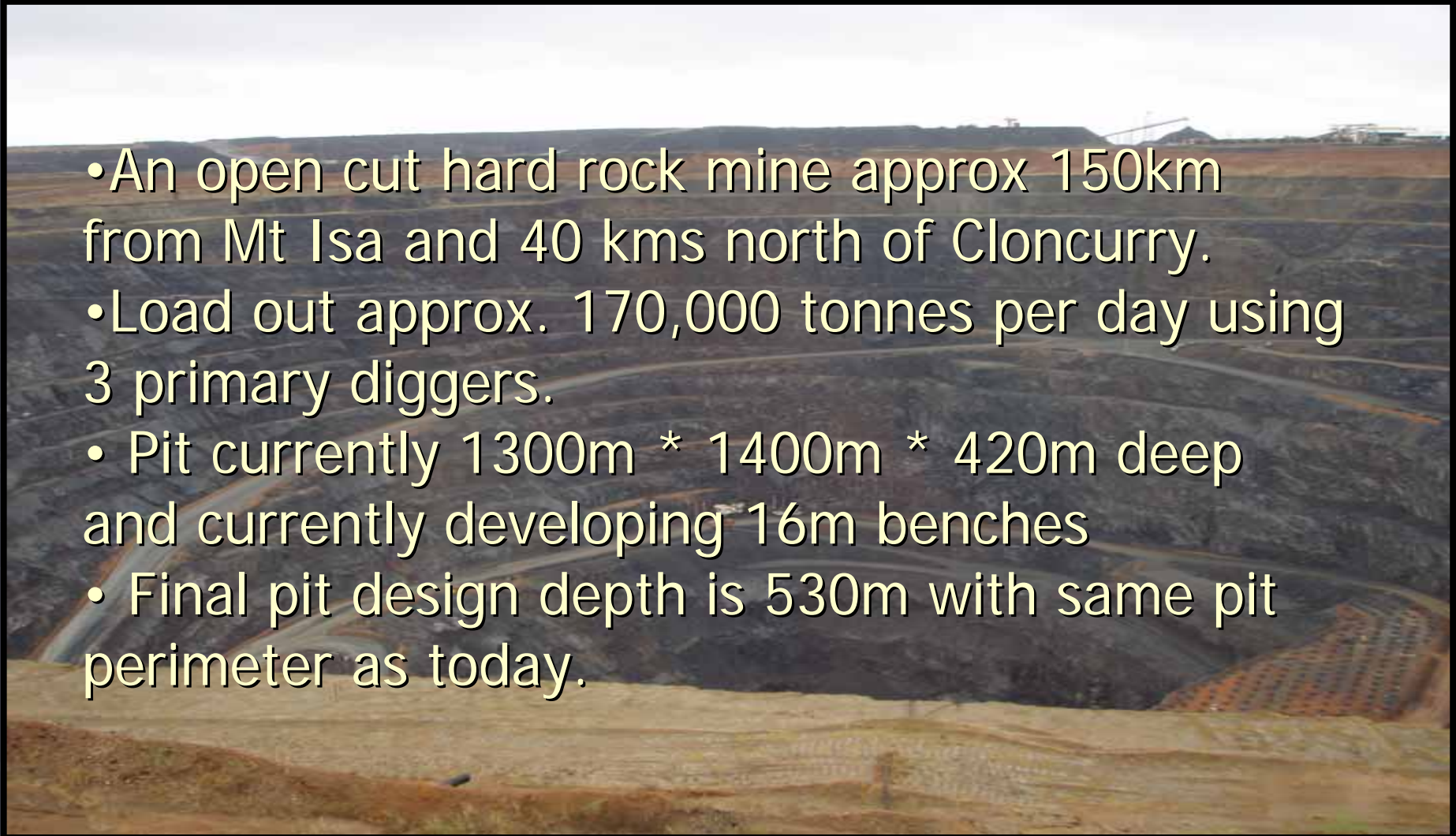
# Ernest Henry Mine

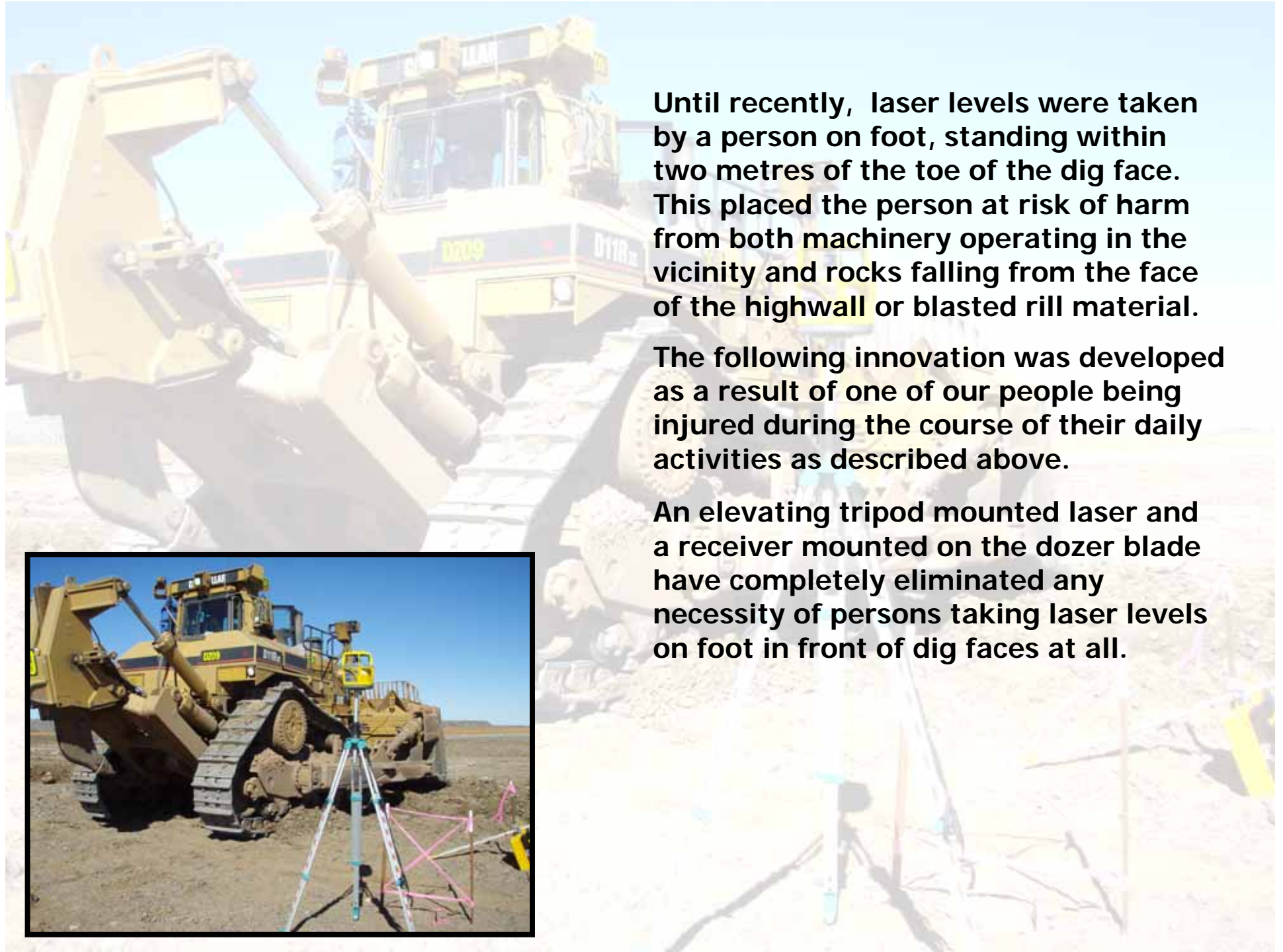


Laser Receiver Mounted on Dozer Blade

# Ernest Henry Mine

- An open cut hard rock mine approx 150km from Mt Isa and 40 kms north of Cloncurry.
- Load out approx. 170,000 tonnes per day using 3 primary diggers.
- Pit currently 1300m \* 1400m \* 420m deep and currently developing 16m benches
- Final pit design depth is 530m with same pit perimeter as today.





**Until recently, laser levels were taken by a person on foot, standing within two metres of the toe of the dig face. This placed the person at risk of harm from both machinery operating in the vicinity and rocks falling from the face of the highwall or blasted rill material.**

**The following innovation was developed as a result of one of our people being injured during the course of their daily activities as described above.**

**An elevating tripod mounted laser and a receiver mounted on the dozer blade have completely eliminated any necessity of persons taking laser levels on foot in front of dig faces at all.**

# Steep walls create GPS shadows





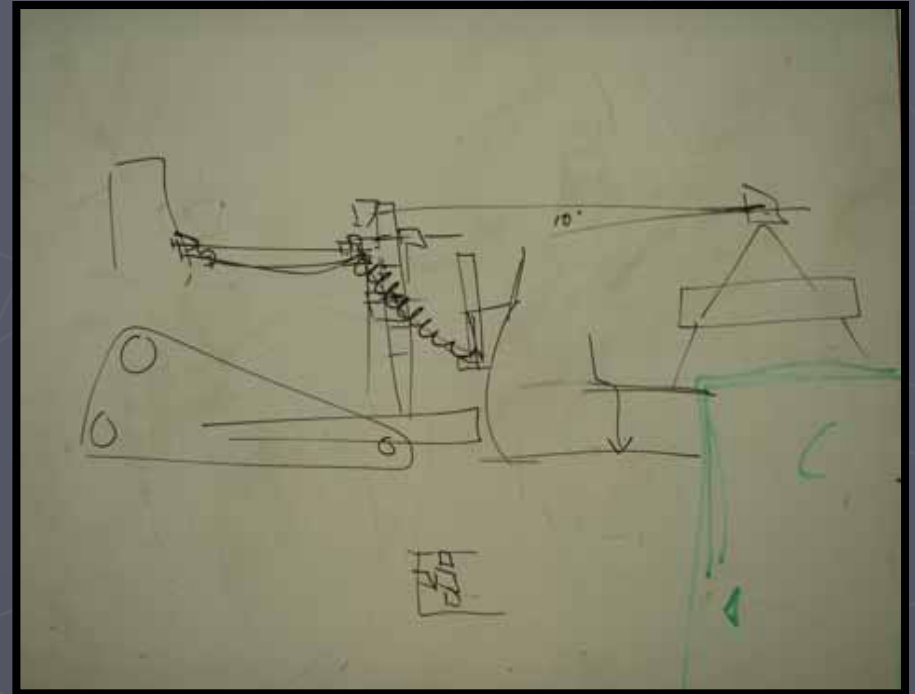
**This paint mark shows how close a co-ordinator worked in proximity to the active dig face.**

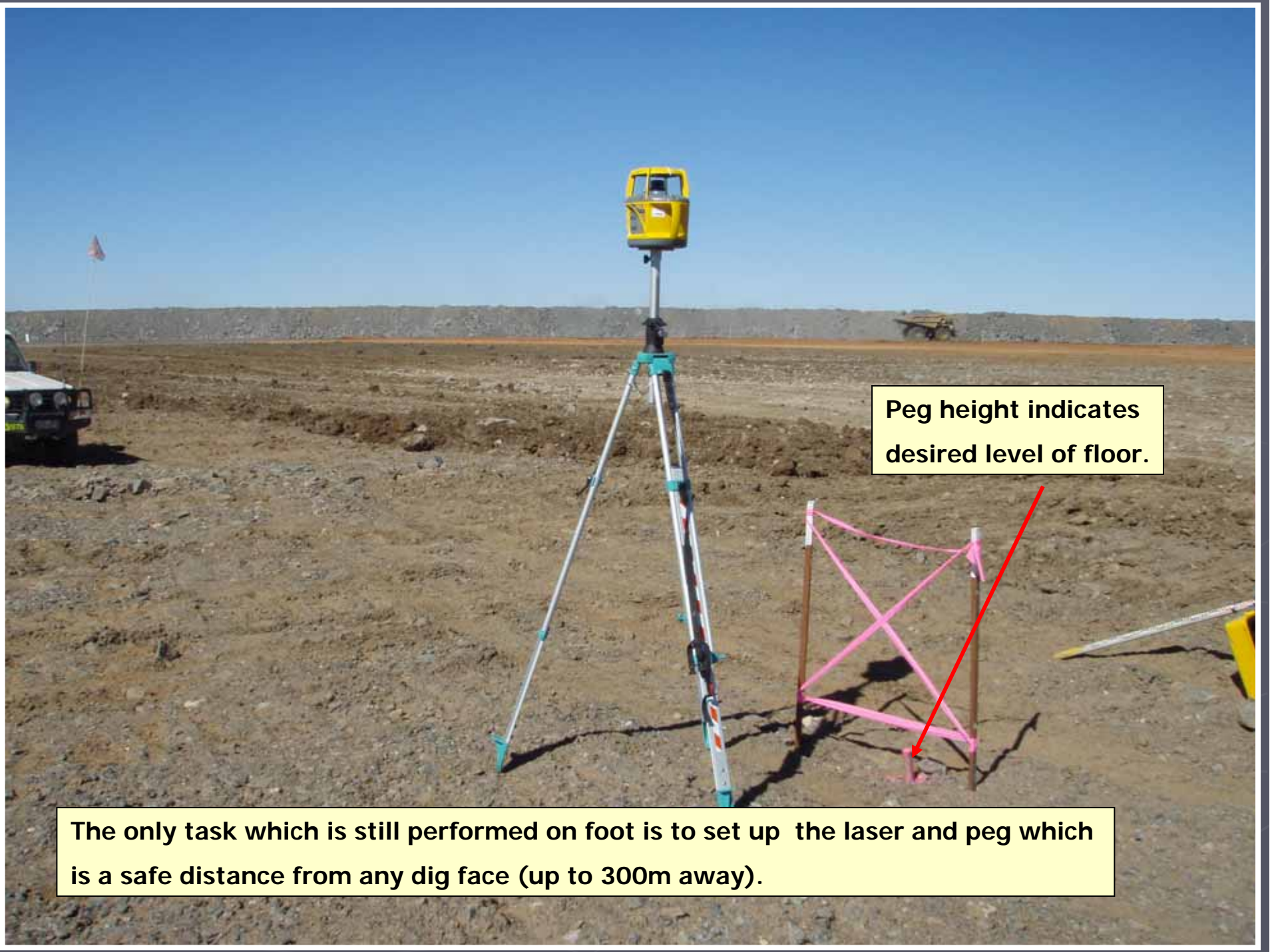
**In the past, the co-coordinators would walk the face with the staff receiver and paint marks on the ground or rocks to show the digger and dozer operators the desired floor level.**

**Two mining co-ordinators would take levels at dig faces and dumps three times daily on average. This was the equivalent of up to six hours of manual labour per day.**

# Conception!!

Discussion between EHM operators and Hastings Deering





**Peg height indicates desired level of floor.**

**The only task which is still performed on foot is to set up the laser and peg which is a safe distance from any dig face (up to 300m away).**



Receiver (protected by steel Guard) is mounted behind dozer blade. There is a corresponding light panel inside dozer cab  
There is no need for paint markers as the lights indicate when the dozer blade is operating at the correct level.



### Price

Laser/receiver \$4660

Tripod \$ 352

Fitting \$1200

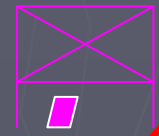
Total \$6212



**Risks eliminated:**

- Pedestrian being injured by rockfall
- Vehicle/Pedestrian interaction

Laser & peg up to  
300m away from  
dozer



Dig face



**Our People are the  
Difference**

QUESTIONS

????????



Our People are the  
Difference