



Maintaining a “Step Change” approach in Health and Safety The Commodore Mine Experience

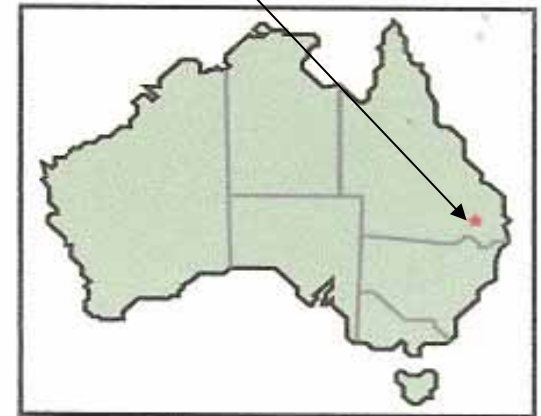
*Kathy Weeden, HSE Coordinator Commodore Mine,
Brendan Davies, Project Manager, Commodore Mine,
Peter Newman, Executive General Manager, HSE, Downer EDI Mining.*



The Commodore Mine



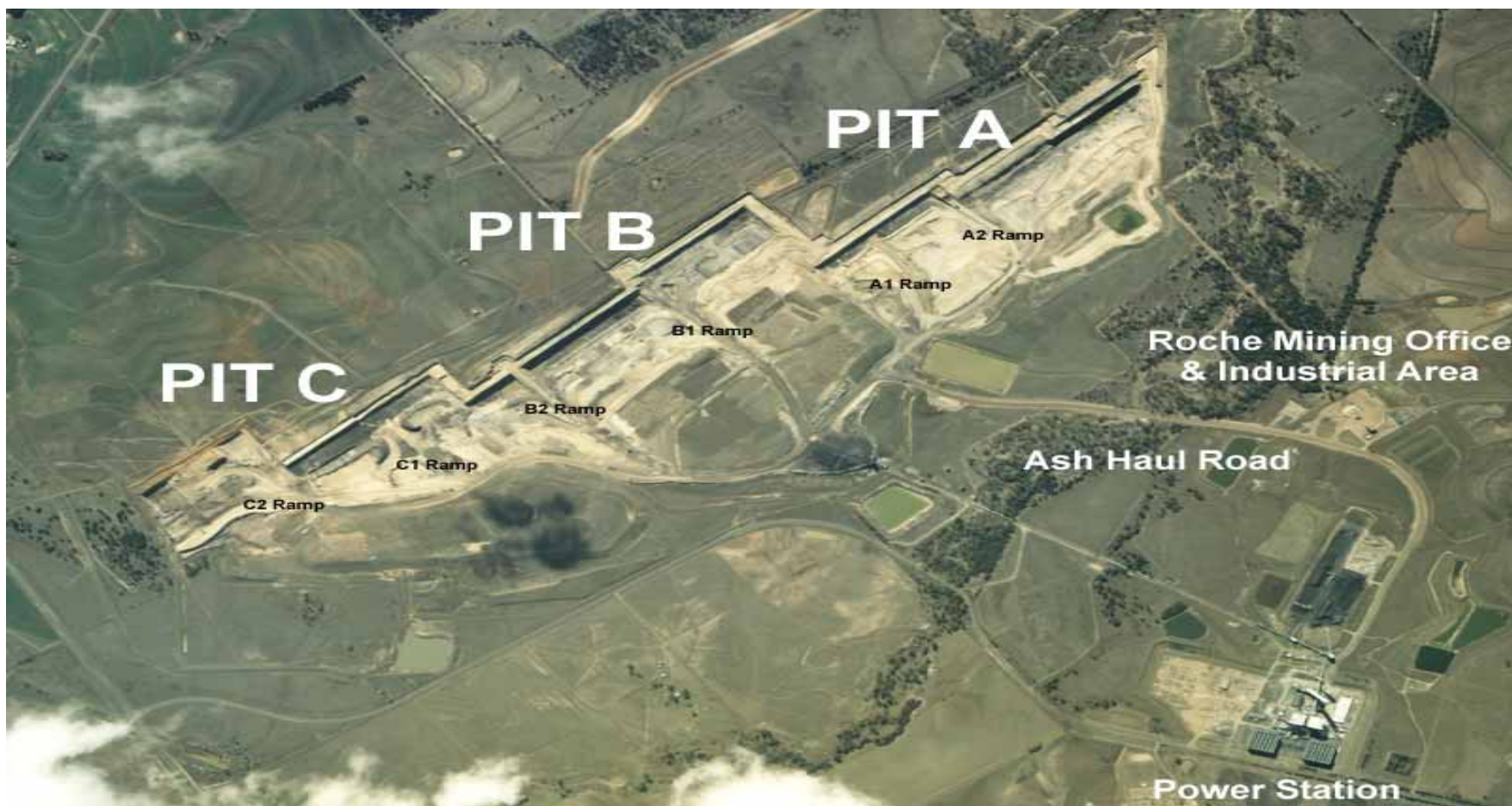
Commodore Mine



Millmerran Power Partners



Commodore Open Cut Coal Mine Overview of Operations



Services provided by Downer EDI Mining for Millmerran Power Partners



A Total Mine Service

- Exploration and geological modelling
- Mine design and scheduling
- Drill and blast service
- Rehabilitation of the site.
- Statutory responsibility as the Operator and the Senior Site Executive.....cont

*Services provided by Downer EDI Mining for
Millmerran Power Partners*



- Delivery 3.5Mtpa raw coal to power station
- Placement 1.2Mt of Ash in rehabilitation works
- Provision, maintenance and operation of mining fleet;
 - 2 x D11R carry dozers with GPS tracking
 - 2 x RH 120E O & K Excavators
 - 6 x 785B dump trucks
 - 2 x 777 dump trucks

Mining Methodology



- ❑ The structure of the deposit and sequence of coal seams required a safe and cost competitive mining methodology to be employed.
- ❑ Introduction of the dozer push, with GPS control, methodology
- ❑ 40% of material by dozer



Ash Placement and Rehabilitation



- ❑ Ash or waste generated from the burning of the coal is hauled back to the mine by Downer EDI and buried in-pit within the spoil dumps.



Industry Benchmark Performance

The Commodore Journey

Challenges



- Workforce employed from local farming area, some continuing their farms
- First coal operation for Downer EDI Mining and first time it had taken on the Statutory Operator and Senior Site Executive role
- Introduction of new mining methodology and workplace arrangements
- Multiple changes to the leadership team

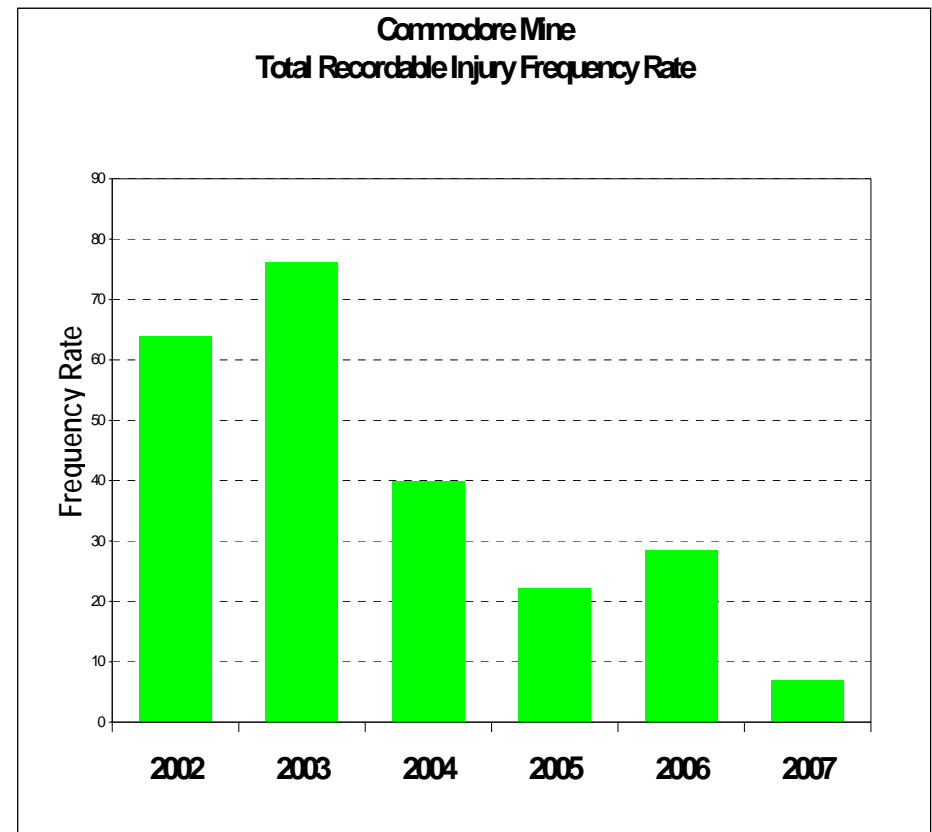


Industry Benchmark Performance

The Commodore Journey

Highlights

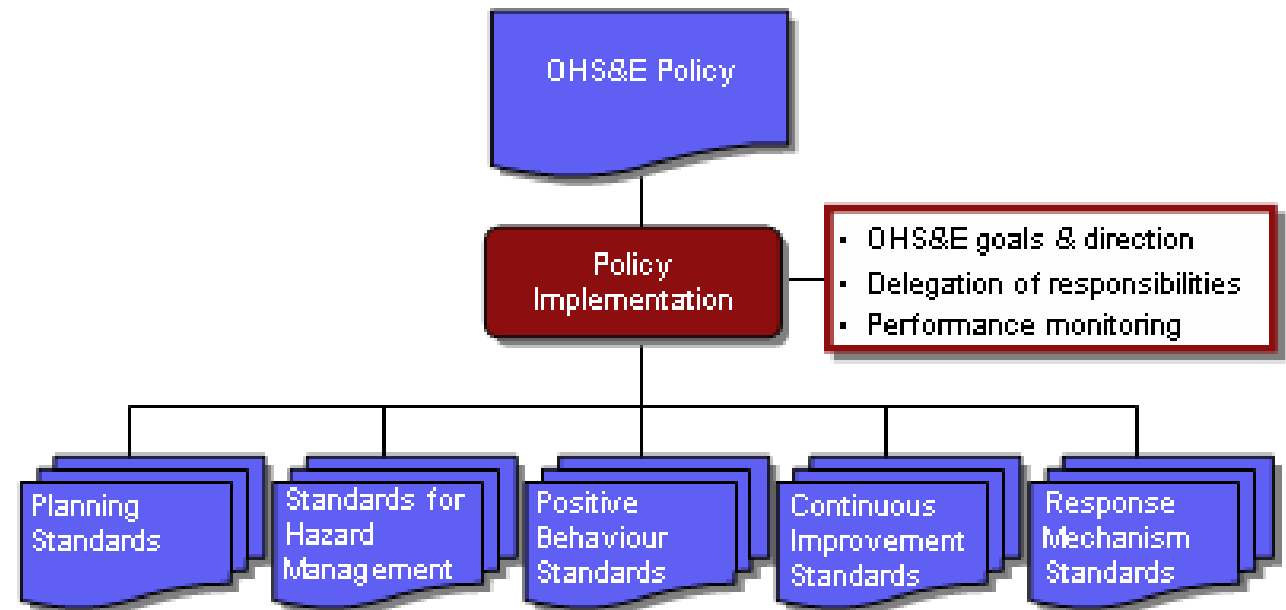
- ❑ Lost Time Injury Free workplace in project life of over 6 years
- ❑ Mining Industry Safety Award Recognition
- ❑ Workforce involvement and engagement
- ❑ Third party recognition of safety system effectiveness
- ❑ Security of coal supply to the power station



Safety Management System



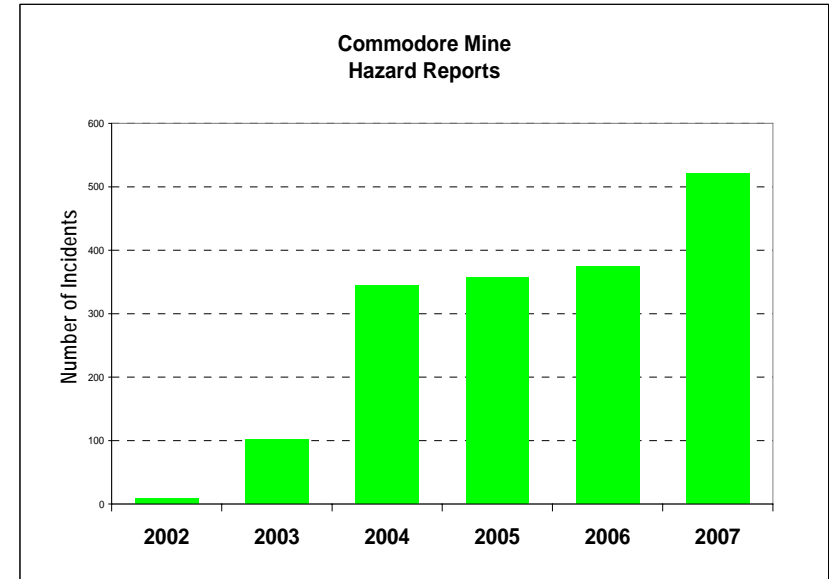
- ❑ Downer EDI Mining web based safety management system provides framework
- ❑ Risk based safety system available to all on site



The importance of Safety at Commodore

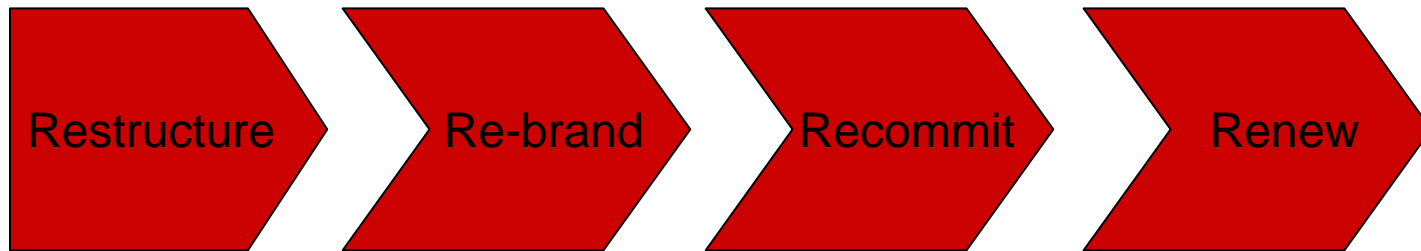


- ❑ Involvement and engagement of workforce and leadership form the basis of maintaining a “Step Change” approach to safety.
- ❑ The safety standard we accept is the safety standard we will get
- ❑ Positive performance measures a major role in safety leadership
- ❑ Hazard close out





The 5 R's of "Step Change" approach to Safety



Ensure that at all times you have the people with the passion and desire to make it happen.

Ensure Safety always has a fresh approach, promoting and realising the benefits of working in a safe workplace.

Acknowledge that every employee is a key part of making the workplace safe and it is imperative there is commitment from the total team. Use the review process to recommit

Ensure that you recognise the positives and celebrate the successes. Use the review process to renew commitment

Rewards

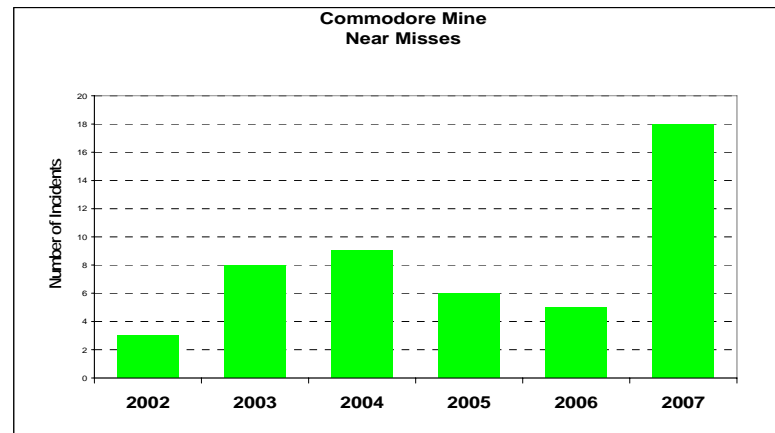


Rewards

- Management driving proactive initiatives rather than chasing reactive issues
- Recognition and celebration of the wins and positive performances
- Provides succession planning on site
- Provides new opportunities
- Makes the workplace an interesting and enjoyable place to be with new ideas and approaches in safety leadership and systems

Creating a strong safety culture

- ❑ Safety requires an active approach and strong leadership
- ❑ The Downer EDI Mining web based safety system is in place and accessible to everyone.
- ❑ Employees are accountable for their own safety and responsible for each other
- ❑ Employees sharing responsibility for a safe work environment creates strong safety culture
- ❑ Celebrate the wins – not just the milestones



Monthly Safety Award



Looking to the Future Another “Step Change” in Health and Safety



- ❑ Keep the “Crystal Ball” of safety in the air when the other balls may fall. When the ball shatters you can never find or rebuild the pieces
- ❑ The Goal must to be Zero Harm

.....The final word from our workforce